

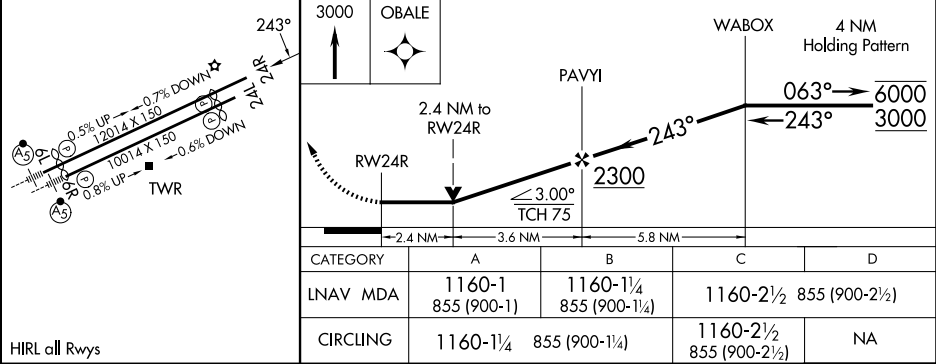
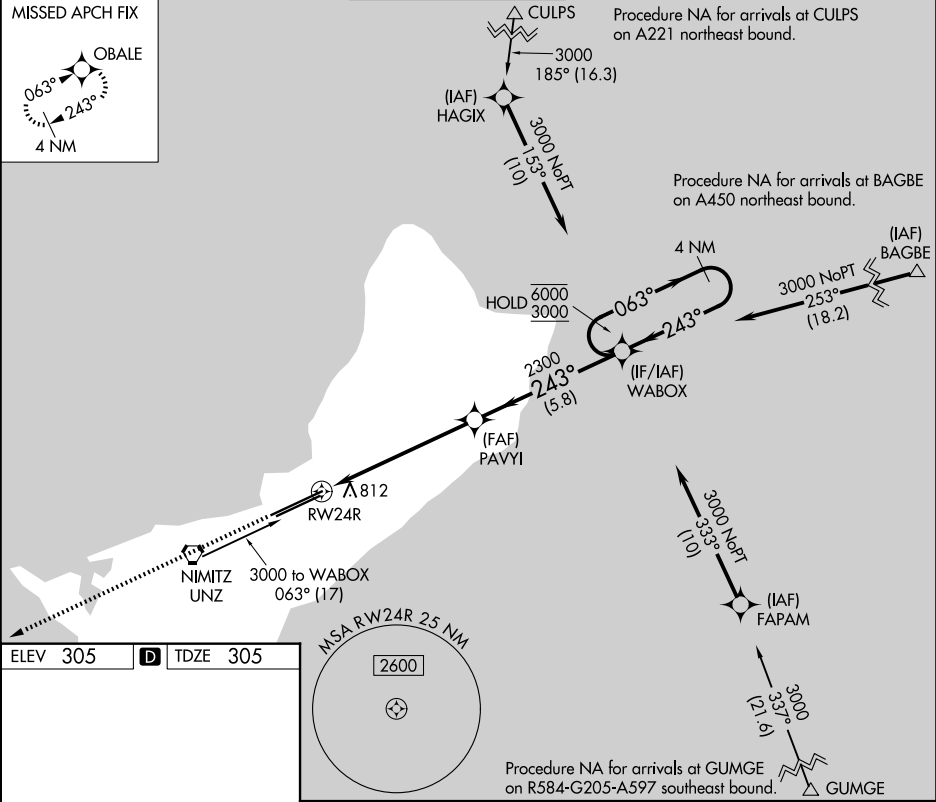
| | | |
|---------|----------|-------|
| APP CRS | Rwy Ldg | 12014 |
| 243° | TDZE | 305 |
| | Apt Elev | 305 |

RNAV (GPS) Y RWY 24R

GUAM INTL (GUM)(PGUM)

| | | |
|-----------------|--|---|
| RNP APCH - GPS. | | MISSED APPROACH: Climb to 3000 direct OBALE and hold. |
| | Circling NA southeast of Rwy 6R-24L. | |
| | Rwy 24R helicopter visibility reduction below 3/4 SM NA. | |

| | | | | |
|-------|-------------|-------------|-------------|----------|
| ATIS | GUAM CERAP | AGANA TOWER | GND CON | CLNC DEL |
| 119.0 | 119.8 269.0 | 118.1 340.2 | 121.9 336.4 | 121.9 |



PAC, 07 AUG 2025 to 02 OCT 2025

PAC, 07 AUG 2025 to 02 OCT 2025