

APP CRS 063°	Rwy Ldg 10014 TDZE 258 Apt Elev 305
------------------------	--

RNAV (RNP) Z RWY 6R
GUAM INTL (GUM)(PGUM)

RNP AR APCH - GPS.

T For uncompensated Baro-VNAV systems, procedure NA below 19°C or above 48°C. For inop ALS, increase RNP 0.30 all Cats visibility to 1½ SM. Inop table does not apply to RNP 0.30.*

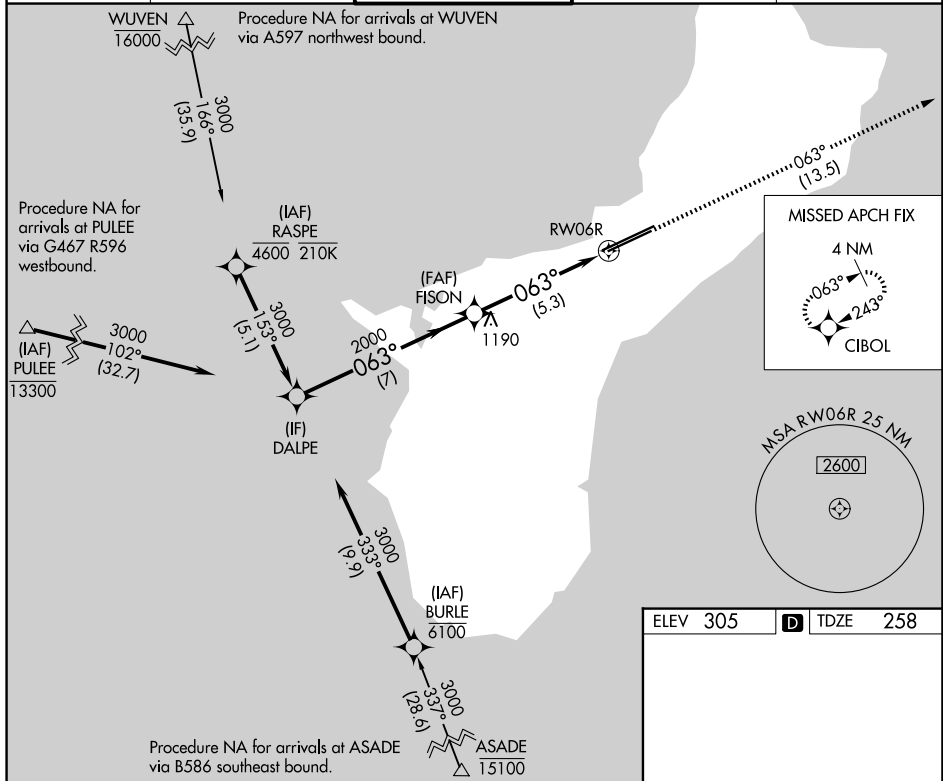
*Missed approach requires a minimum climb of 285 feet per NM to 1400.

MALSR

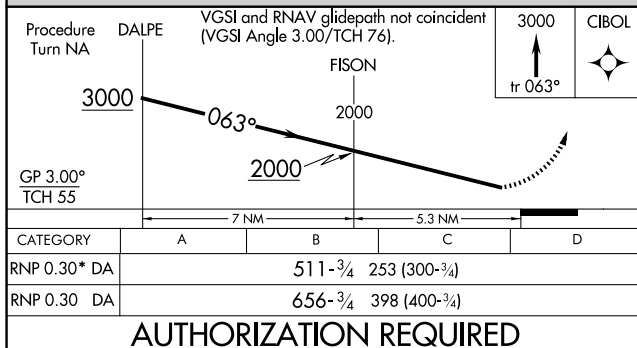


MISSED APPROACH: Climb to 3000
via track 063° to CIBOL and hold.

ATIS 119.0	GUAM CERAP 119.8 269.0	AGANA TOWER 118.1 340.2	GND CON 121.9 336.4	CLNC DEL 121.9
---------------	---------------------------	----------------------------	------------------------	-------------------



ELEV 305	D	TDZE 258
----------	----------	----------



AUTHORIZATION REQUIRED

HIRL all Rwy: