

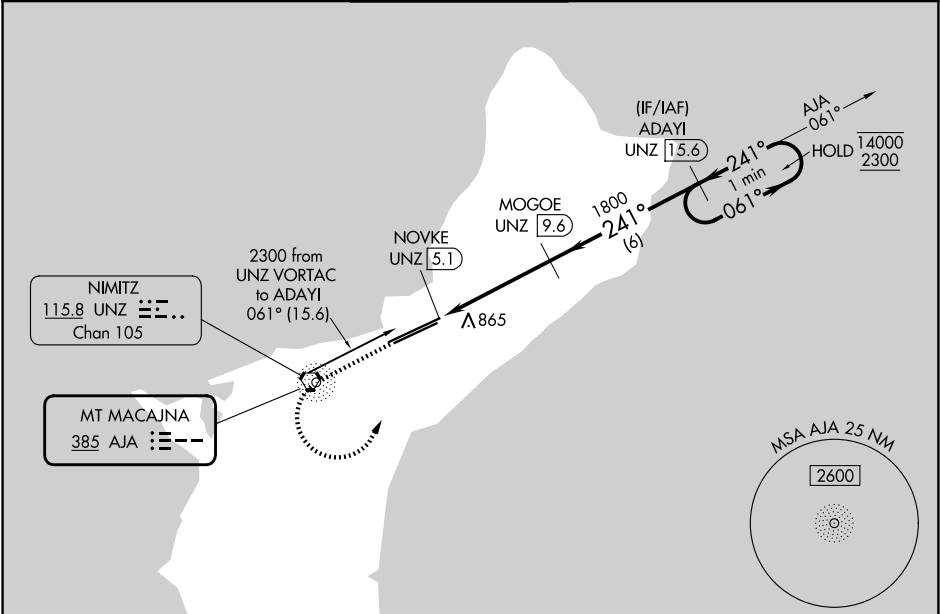
| | | |
|------------|-------------|--------------|
| NDB AJA | APP CRS | Rwy Ldg |
| <u>385</u> | <u>241°</u> | <u>12014</u> |
| | TDZE | <u>305</u> |
| | Apt Elev | <u>305</u> |

NDB RWY 24R

GUAM INTL (GUM)(PGUM)

| | |
|--|---|
| DME required. | MISSED APPROACH: Climb to 2300 direct AJA NDB and left turn on AJA NDB bearing 061° to ADAYI/UNZ 15.6 DME and hold. |
| <div><div>NA</div><div>Circling NA southeast of Rwy 6R-24L. Rwy 24R helicopter visibility reduction below ¾ SM NA. Simultaneous reception of AJA NDB and UNZ DME required.</div></div> | |

| | | | | |
|-------|-------------|-------------|-------------|----------|
| ATIS | GUAM CERAP | AGANA TOWER | GND CON | CLNC DEL |
| 119.0 | 119.8 269.0 | 118.1 340.2 | 121.9 336.4 | 121.9 |



| | | |
|----------|---|----------|
| ELEV 305 | D | TDZE 305 |
|----------|---|----------|

