

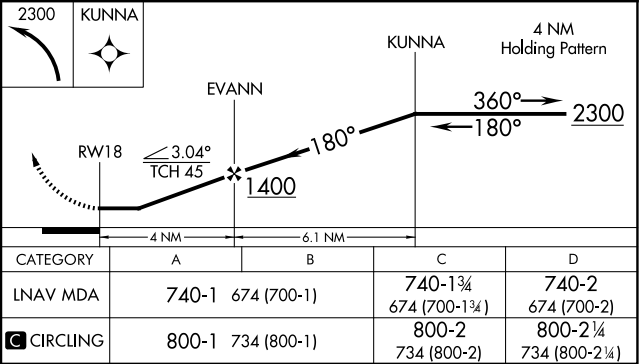
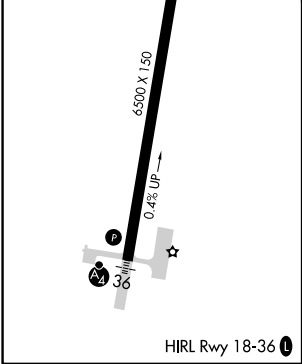
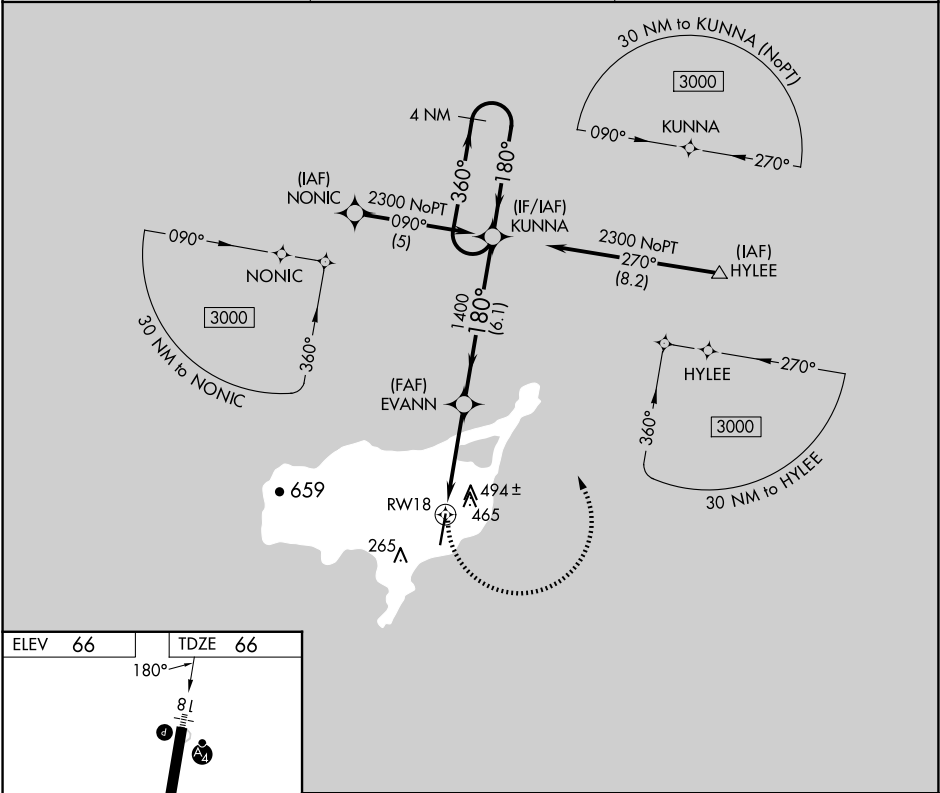
APP CRS	Rwy Ldg	6500
180°	TDZE	66
	Apt Elev	66

RNAV (GPS) RWY 18

ST PAUL ISLAND (SNP) (PASN)

RNP APCH.	MALSF	MISSED APPROACH: Climbing left turn to 2300 direct KUNNA and hold.
<div><div>▼</div>Inoperative table does not apply.</div> <div><div>▲</div>Circling NA west of Rwy 18-36.</div> <div>Rwy 18 helicopter visibility reduction below 1 SM NA.</div>	<div><div>▼</div></div>	

ASOS 135.75	ANCHORAGE CENTER 119.1 339.8	CTAF 122.3 0
----------------	---------------------------------	-----------------



AK, 07 AUG 2025 to 02 OCT 2025

AK, 07 AUG 2025 to 02 OCT 2025