

LOC I-PAU <b>109.9</b>	APP CRS <b>180°</b>	Rwy Ldg TDZE <b>66</b> Apt Elev <b>66</b>
---------------------------	------------------------	---

LOC/DME BC RWY 18  
ST PAUL ISLAND (SNP) (PASN)

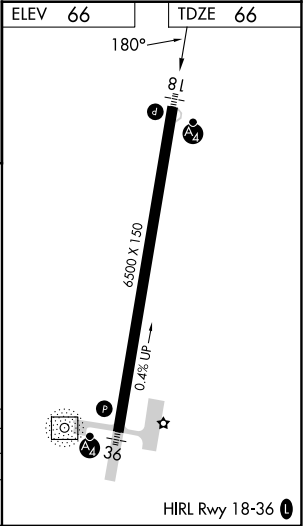
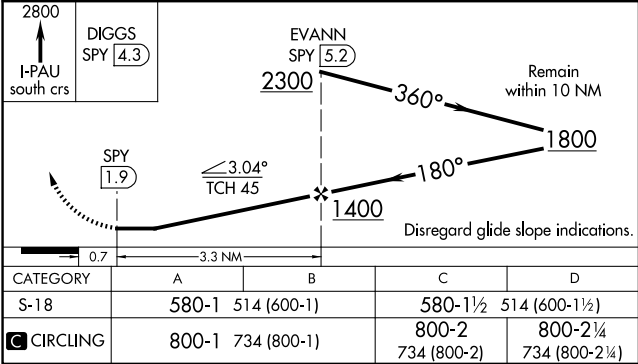
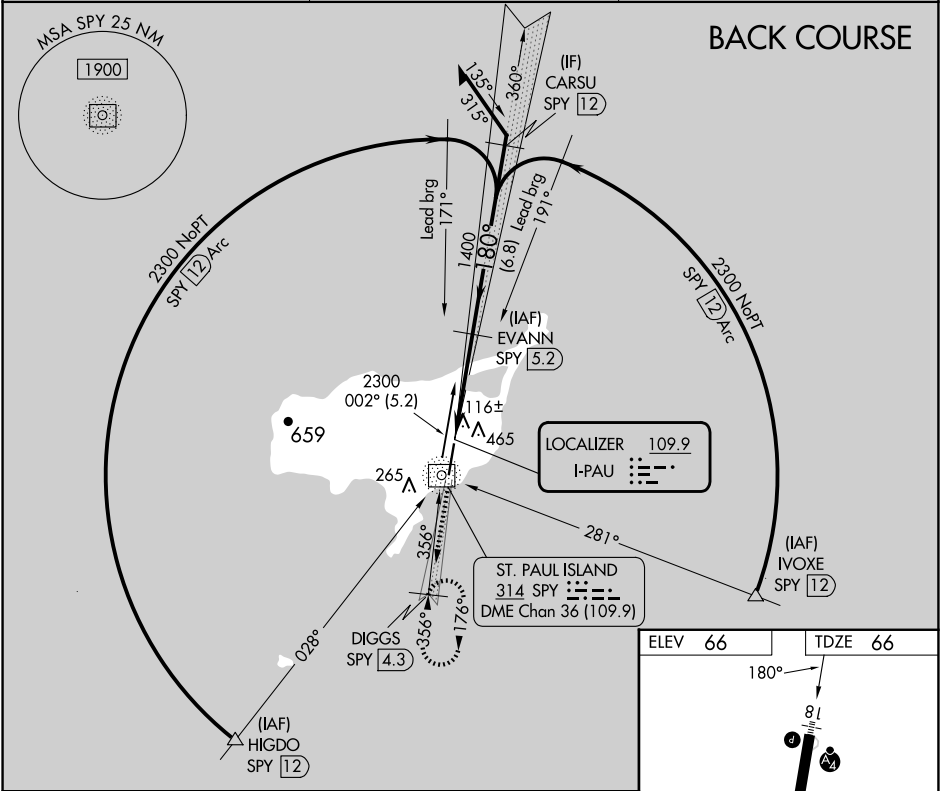
**▼** Inoperative table does not apply. Circling NA west of Rwy 18-36. Rwy 18 helicopter visibility reduction below 1 SM NA. DME from SPY NDB/DME. Simultaneous reception of I-PAU and SPY DME required.

**▲**

**MALSF**

**MISSED APPROACH:** Climb to 2800 via I-PAU south course to DIGGS/SPY 4.3 DME and hold, continue climb-in-hold to 2800.

ASOS <b>135.75</b>	ANCHORAGE CENTER <b>119.1 339.8</b>	CTAF <b>122.3 0</b>
-----------------------	--	------------------------



AK, 07 AUG 2025 to 02 OCT 2025

AK, 07 AUG 2025 to 02 OCT 2025