

LOC I-PAU <u>109.9</u>	APP CRS 360°	Rwy Ldg TDZE Apt Elev	6500 47 66
----------------------------------	------------------------	-----------------------------	---------------------------------------

ILS or LOC RWY 36
ST PAUL ISLAND(SNP)(PASN)

ADF and DME required for procedure entry. DME required.

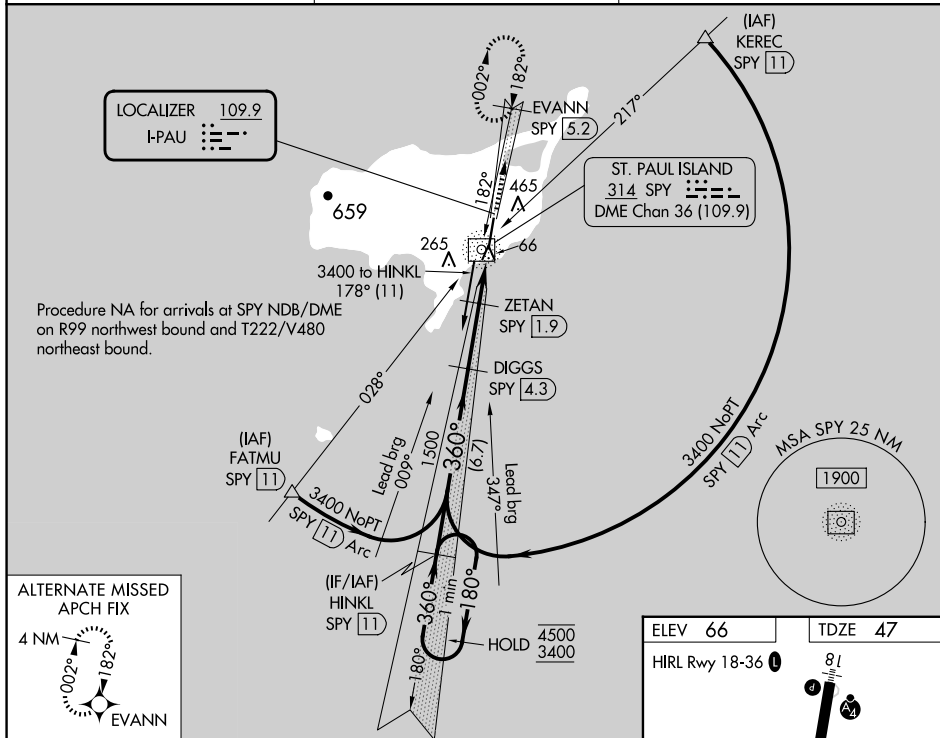
T Circling NA west of Rwy 18-36. Inop table does not apply to S-ILS.
A When local altimeter setting not received, procedure NA. DME from SPY NDB/DME. Simultaneous reception of I-PAU and SPY DME required.

MALSF



MISSED APPROACH: Climb to 2700 on I-PAU north course (360°) to EVANN/SPY 5.2 DME and hold, continue climb-in-hold to 2700.

ASOS 135.75	ANCHORAGE CENTER 119.1 339.8	CTAF 122.3 0
-----------------------	--	------------------------



ALTERNATE MISSED
APCH FIX



One Minute Holding Pattern

HINKL SPY (11)

DIGGS SPY (4.3)

ZETAN SPY (1.9)

EVANN SPY (5.2)

2700

I-PAU N crs (360°)

*LOC only

4500 ← 180°

3400 → 360°

360°

1480

1500

*SPY (0.9)

*SPY (0.3)

*720

6.7 NM

2.4 NM

1 NM

1 NM

CATEGORY	A	B	C	D
S-ILS 36		247- ³ / ₄	200 (200- ³ / ₄)	
S-LOC 36		380- ³ / ₄	333 (400- ³ / ₄)	
C CIRCLING	800-1 734 (800-1)	800-2 734 (800-2)	800-2 1/4 734 (800-2 1/4)	

ELEV 66

TDZE 47

HIRL Rwy 18-36

Diagram showing a 180-degree turn procedure. The path starts at a point labeled '36' with a star symbol and a dashed circle. The path goes straight up, then turns 180 degrees to go straight down. The descent is labeled '6500 X 150' and '0.4% UP'. The path ends at a point labeled '81' with a star symbol and a dashed circle. A small inset shows a compass rose with 'O' in the center. A 360-degree heading is indicated at the start of the path.

FAF to MAP 4.4 NM

Knots	60	90	120	150	180
Min:Sec	4:24	2:56	2:12	1:46	1:28