

VOR/DME OTZ	APP CRS	Rwy Idg	5900
115.7	257°	TDZE	15
Chan 104		Apt Elev	15

VOR RWY 27
RALPH WIEN MEML (OTZ) (PAOT)

DME required.

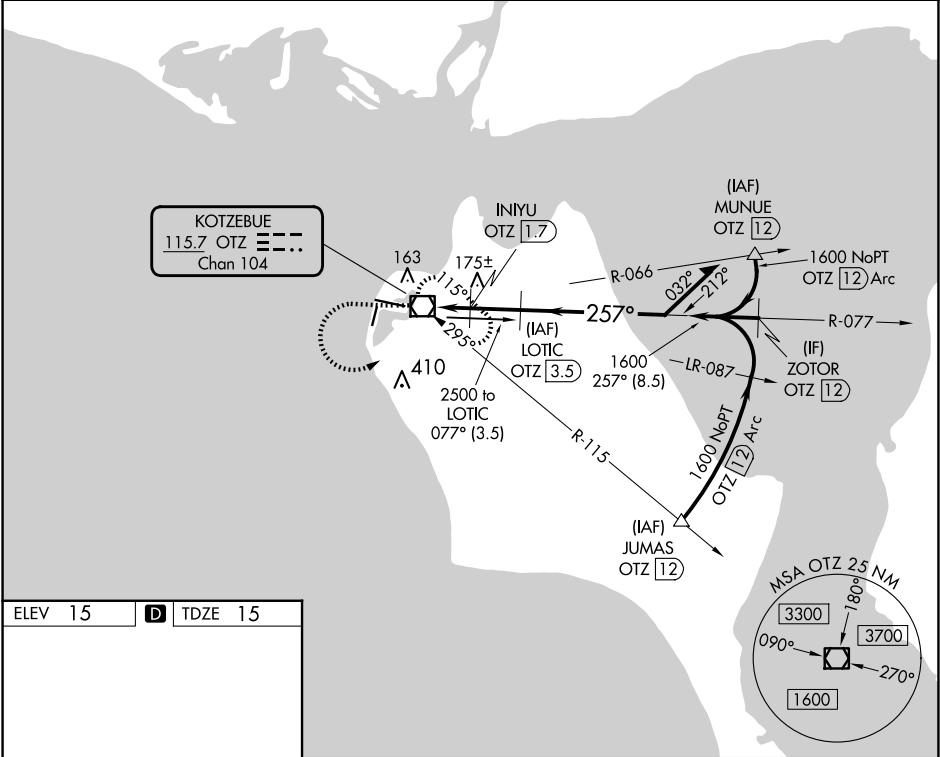
▼

▲

Circling to Rwy 18, 36 NA at night. Rwy 27 helicopter visibility reduction below 1 SM NA. Straight-in Rwy 27 at night, Circling Rwy 27 at night, operational VGS required, remain on or above glidepath until threshold.

MISSED APPROACH: Climb to 1600 then climbing left turn to 2000 direct OTZ VOR/DME and hold, continue climb-in-hold to 2000.

AFIS 135.45	ANCHORAGE CENTER 119.2 263.0	KOTZEBUE RADIO 123.6 (CTAF) 0
----------------	---------------------------------	----------------------------------



ELEV 15

TDZE 15

1600

2000

OTZ

LOTIC OTZ 3.5

INIYU OTZ 1.7

OTZ VOR/DME

920

1600

257°

077°

1600

REIL Rws 9 and 27

HIRL Rwy 9-27

MIRL Rwy 18-36

CIRCLING

CATEGORY	A	B	C	D
S-27	440-1	425 (500-1)	440-1¼	425 (500-1¼)
CIRCLING	520-1	505 (600-1)	720-2	720-2¼

AK, 07 AUG 2025 to 02 OCT 2025

AK, 07 AUG 2025 to 02 OCT 2025