

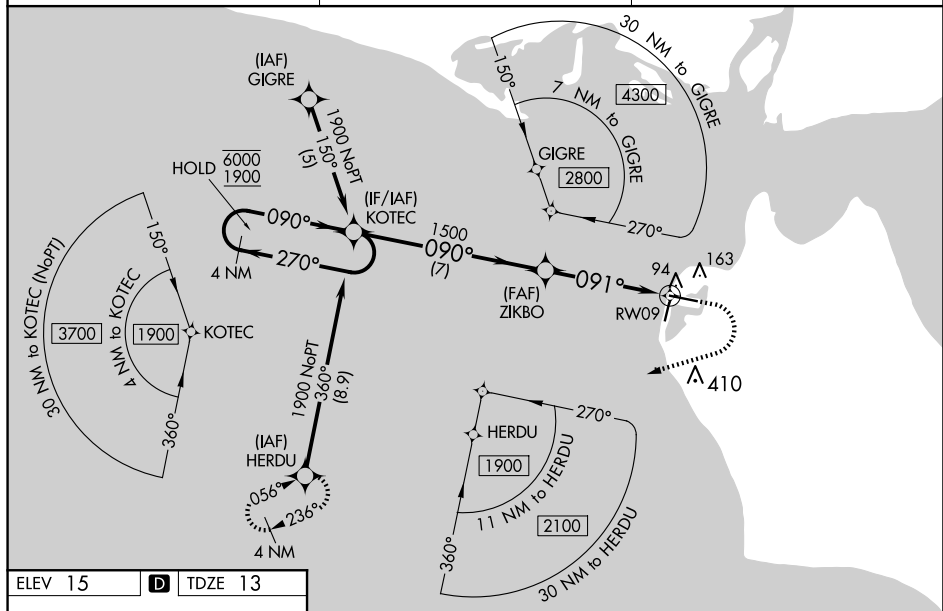
RNAV (GPS) RWY 9

RALPH WIEN MEML (OTZ) (PAOT)

V Circling Rwy 18, 36 NA at night, Circling Rwy 27 at night, operational
A VGSi required, remain on or above VGSi glidepath until threshold.
Rwy 9 helicopter visibility reduction below RVR 4000 NA. For
uncompensated Baro-VNAV systems, LNAV/VNAV NA below -20°C
or above 54°C.

MISSED APPROACH: Climb to 500 then climbing right turn to 2000 direct HERDU and hold.

KOTZEBUE RADIO
123.6 (CTAF) L



091°

6300 X 150

27

81

3874 X 90

36

REIL Rwys 9 and 27
HIRL Rwy 9-27
MIRL Rwy 18-36

