

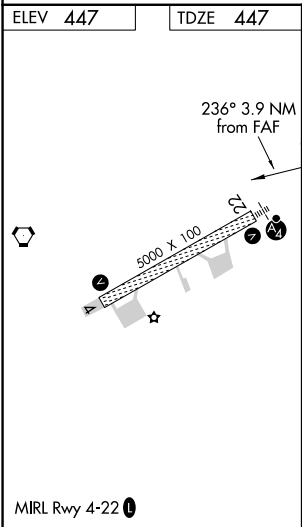
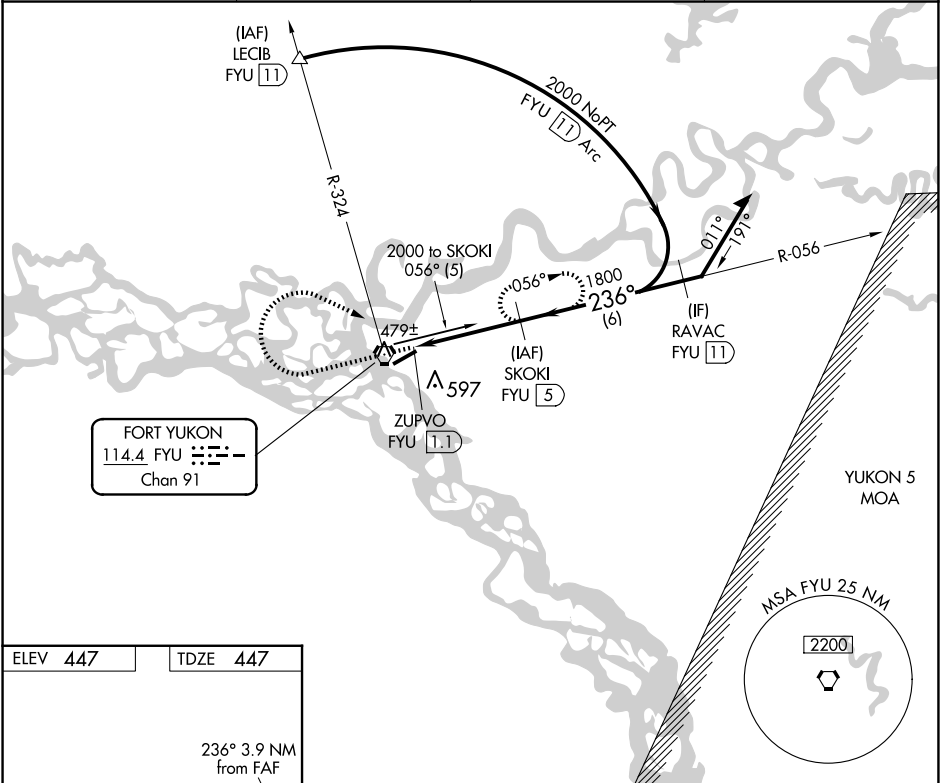
VORTAC FYU	Rwy Idg	5000
114.4	TDZE	447
Chan 91	Apt Elev	447

APP CRS
236°

VOR/DME or TACAN RWY 22
FORT YUKON (FYU) (PFYU)

<p>▼ Inop table does not apply. Circling NA southeast of Rwy 4-22. Rwy 22 Straight-In and Circling minimums NA at night. Helicopter visibility reduction below 1 SM NA.</p>	<p>MALSF</p>	<p>MISSED APPROACH: Climb to 2000 then right turn on heading 100° and FYU VORTAC R-056 to SKOKI/5 DME and hold.</p>
--	--------------	---

AWOS-3P 125.8	ANCHORAGE CENTER 135.0 225.4	FAIRBANKS RADIO 122.05	CTAF 122.5 0
------------------	---------------------------------	---------------------------	-----------------



2000	↑	hdg 100°	FYU R-056	SKOKI FYU (5)	SKOKI FYU (5)	VGSI and descent angles not coincident (VGSI Angle 3.00/TCH 27).
ZUPVO FYU (1.1)	≤ 3.14°	TCH 45	1800	056°	236°	2000
						Remain within 10 NM
						3.9 NM
CATEGORY	A	B	C	D		
S-22	960-1	513 (600-1)	960-1 3/8	513 (600-1 3/8)		
CIRCLING	960-1	513 (600-1)	960-1 1/2	513 (600-1 1/2)	1000-2	553 (600-2)