

WAAS CH 72939 W04A	APP CRS 040°	Rwy Idg 5000 TDZE 447 Apt Elev 447
--	------------------------	---

RNAV (GPS) RWY 4

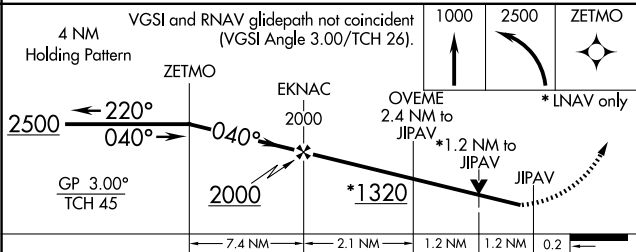
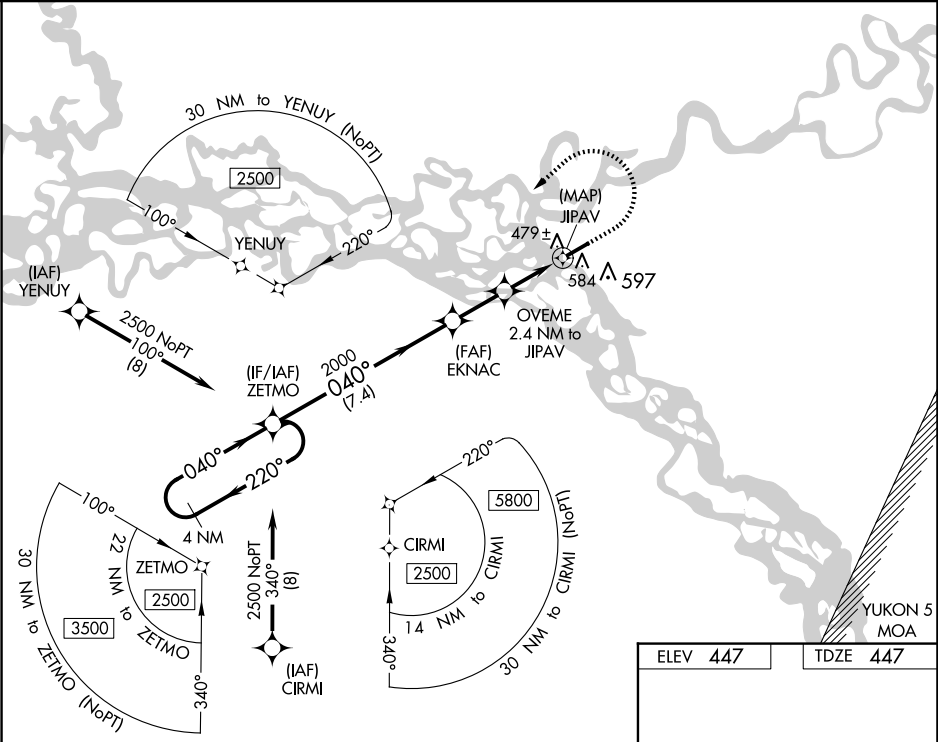
FORT YUKON (FYU) (PFYU)

▼

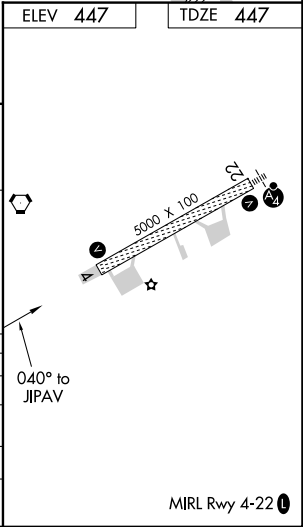
For uncompensated Baro-VNAV systems, LNAV/VNAV NA below -20° C (-4°F) or above 54°C (130°F). Circling NA southeast of Rwy 4-22. DME/DME RNP-0.3 NA. Rwy 4 helicopter visibility reduction below $\frac{3}{4}$ SM NA.

MISSED APPROACH: Climb to 1000 then climbing left turn to 2500 direct ZETMO and hold.

AWOS-3P 125.8	ANCHORAGE CENTER 135.0 225.4	FAIRBANKS RADIO 122.05	CTAF 122.5 0
-------------------------	--	----------------------------------	------------------------



CATEGORY	A	B	C	D
LPV DA	697-1		250 (300-1)	
LNAV/VNAV DA	764-1		317 (400-1)	
LNAV MDA	860-1 413 (500-1)		860-1 $\frac{1}{8}$ 413 (500-1 $\frac{1}{8}$)	
CIRCLING	860-1 413 (500-1)		900-1 453 (500-1)	
	900-1 453 (500-1)		900-1 $\frac{1}{2}$ 453 (500-1 $\frac{1}{2}$)	
			1000-2 553 (600-2)	



AK, 07 AUG 2025 to 02 OCT 2025

AK, 07 AUG 2025 to 02 OCT 2025