

MILTON, FLORIDA

ILS Z or RNAV (GPS) RWY 32

LOC/DME I-NDZ 110.55 Chan 42(Y)	APCH CRS 319°	Rwy Idg TDZE 172 Arprt Elev 177
--	-------------------------	---

AL-1909 [USN]

WHITING FLD NAS - SOUTH (KNDZ)

RNP APCH. RNAV 1 - GPS.

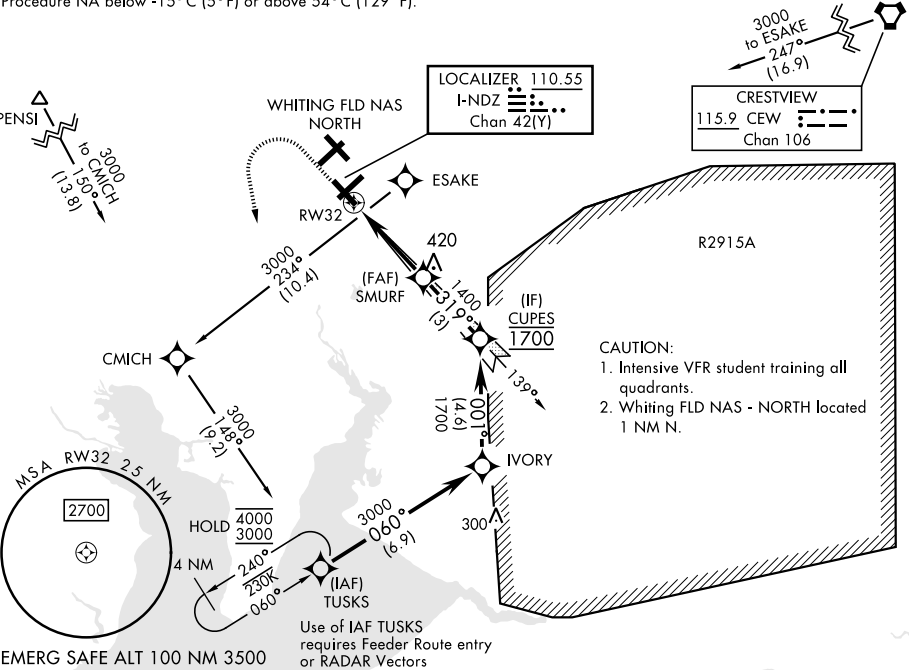
- ▼ * When ALS inop, increase vis to ½ mile.
** When ALS inop, increase vis to 1 mile.
*** Circling not authorized N of Rwy 14 and 23.




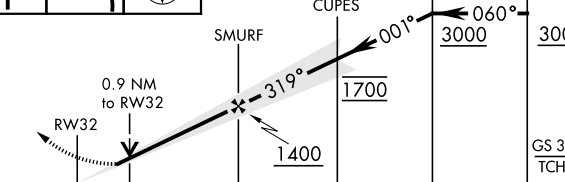


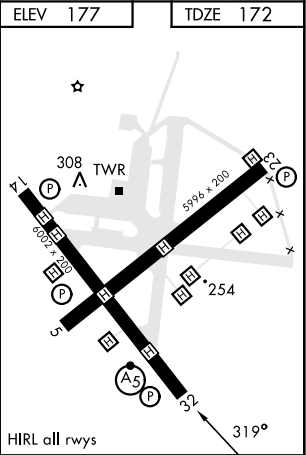
MISSED APPROACH: Climb to 800. Then climbing left turn to 3000, direct to TUSKS and hold. Contact Pensacola Approach Control.

ATIS ★ 273.575	PENSACOLA APP CON 124.85 235.775	SOUTH WHITING TOWER ★ 123.075 348.675	GND CON 317.65	CLNC DEL 355.6	ASR/ PAR
--------------------------	--	---	--------------------------	--------------------------	-------------

For uncompensated Baro-VNAV systems,
Procedure NA below -15°C (5°F) or above 54°C (129°F).



800	3000	TUSKS		
				
				
CATEGORY	A	B	C	D
S-ILS 32 *	372-½		200	(200-½)
LNAV/ * VNAV DA	422-½	250	(300-½)	425-½ 253 (300-½)
LNAV MDA **	520-½ 348 (400-½)		520-¾ 348 (400-¾)	
*** CIRCLING	580-1 403 (500-1)	640-1 463 (500-1)	660-1½ 483 (500-1½)	740-2 563 (600-2)



MILTON, FLORIDA

30°42'N-87°01'W

WHITING FLD NAS - SOUTH (KNDZ)

Orig 10AUG23

ILS Z or RNAV (GPS) RWY 32

SE-3, 07 AUG 2025 to 04 SEP 2025

SE-3, 07 AUG 2025 to 04 SEP 2025