


MILTON, FLORIDA

ILS Y or LOC Y RWY 32

LOC/DME I-NDZ 110.55 Chan 42(Y)	APCH CRS 319°	Rwy Idg TDZE 172 Arprt Elev 177
---	-------------------------	---

[USN]

WHITING FLD NAS - SOUTH (KNDZ)

TACAN, DME, RADAR required.	MALSR 	MISSED APPROACH: Climb to 700, then climbing left turn to 3000 direct RANLE, continue climb in hold. Contact Pensacola Approach Control.
-----------------------------	--	--

ATIS 273.575	PENSACOLA APP CON 124.85 235.775	SOUTH WHITING TOWER 123.075 348.675	GND CON 317.65	CLNC DEL 355.6	ASR/ PAR
------------------------	--	---	--------------------------	--------------------------	-------------

CAUTION: 1. Intensive VFR student training all quadrants.
2. Whiting FLD NAS - NORTH located 1 NM N.
3. Intmed seg len 1.7 NM less than minimum 2.2 NM.

LOCALIZER **110.55**
I-NDZ 
Chan **42(Y)**

WHITING FLD NAS
NORTH

HIDAS
I-NDZ
0.7

SMURF
I-NDZ
3.9

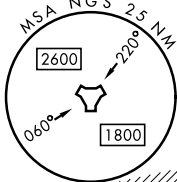
CAPOL
I-NDZ
5.5

RANLE
NGS
2

HOLD
6000
3000

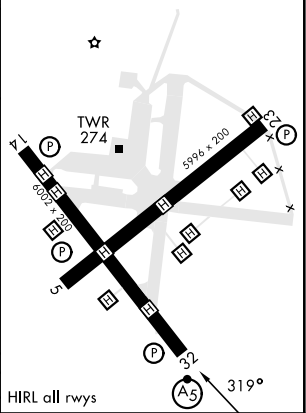
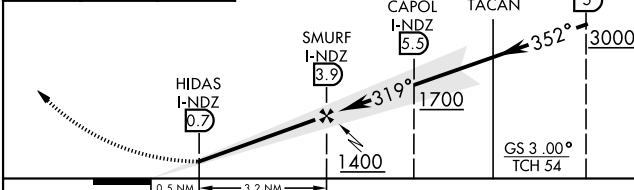
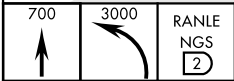
NGS
7

(IAF)
IVORY
NGS
5



ELEV 177 TDZE 172

EMERG SAFE ALT 100 NM 3500



CATEGORY	A	B	C	D
S-ILS 32*	372-½		200	(200-½)
S-LOC 32**	520-½	348 (400-½)	520-⅝	348 (400-⅝)
CIRCLING***	580-1	640-1	660-1½	760-2
	403 (500-1)	463 (500-1)	483 (500-1½)	583 (600-2)

MILTON, FLORIDA

30°42'N-87°01'W

WHITING FLD NAS - SOUTH (KNDZ)

Amtd 1 10JUL25

ILS Y or LOC Y RWY 32

SE-3, 07 AUG 2025 to 04 SEP 2025

SE-3, 07 AUG 2025 to 04 SEP 2025