

TACAN Y RWY 32

TACAN EIL Chan 98	APCH CRS 320°	Rwy Idg 14,529 TDZE 548 Arpt Elev 548
-----------------------------	-------------------------	------------------------------------------------------------------

[USAF]

EIELSON AFB (PAEI)

ATC or RADAR required HRDNG to BOGIE. RNAV or
RADAR monitoring required for missed approach.

ALSF-1

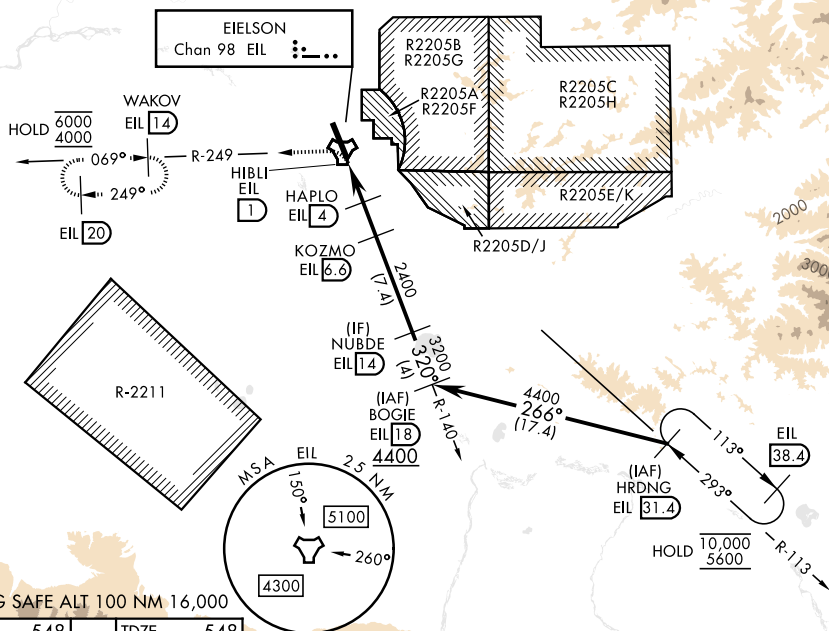
MISSED APPROACH: Climbing left turn on EIL R-249 to 4000 to WAKOV and hold. Continue climb-in-hold.

T * When ALS inop, increase CAT AB RVR to 55, vis to 1 mile; CAT CDE vis to 1 $\frac{3}{8}$ miles.

** Circling not authorized E of Rwy 14-32.

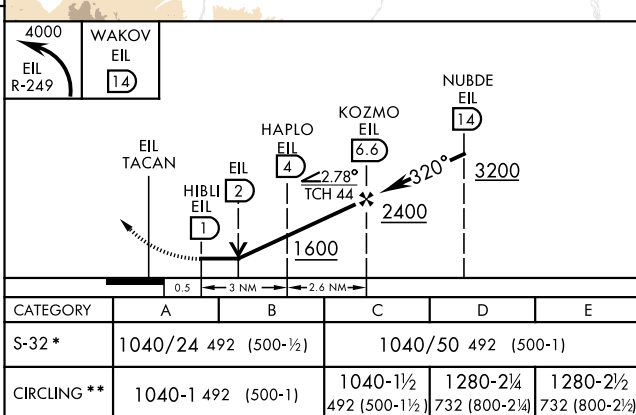
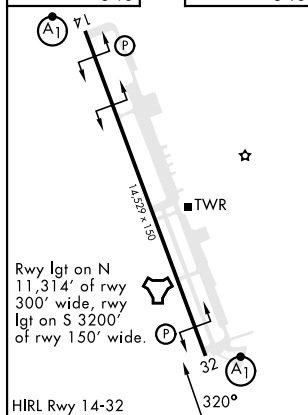
ATIS ★	FAIRBANKS APP CON			TOWER ★		GND CON	CLNC DEL
119.9 273.5	127.1 251.1	360° - 179°		127.2 352.05		121.8 275.8	343.7
	125.35 363.2	180° - 359°					

CAUTION: Uncontrolled airspace below 700' AGL outside EIL CLASS D.



EMERG SAFE ALT 100 NM 16,000

ELEV	548		TDZE	548
------	-----	--	------	-----



FAIRBANKS, ALASKA

64° 40' N-147° 06' W

EIELSON AFB (PAEI)

Orig 15JUN23

TACAN Y RWY 32

AK, 07 AUG 2025 to 02 OCT 2025

AK, 07 AUG 2025 to 02 OCT 2025