

FAIRBANKS, ALASKA

RNAV (GPS) RWY 14

APCH CRS	Rwy Idg	14,529
140°	TDZE	537
	Arpt Elev	548

(USAF)

EIELSON AFB (PAEI)

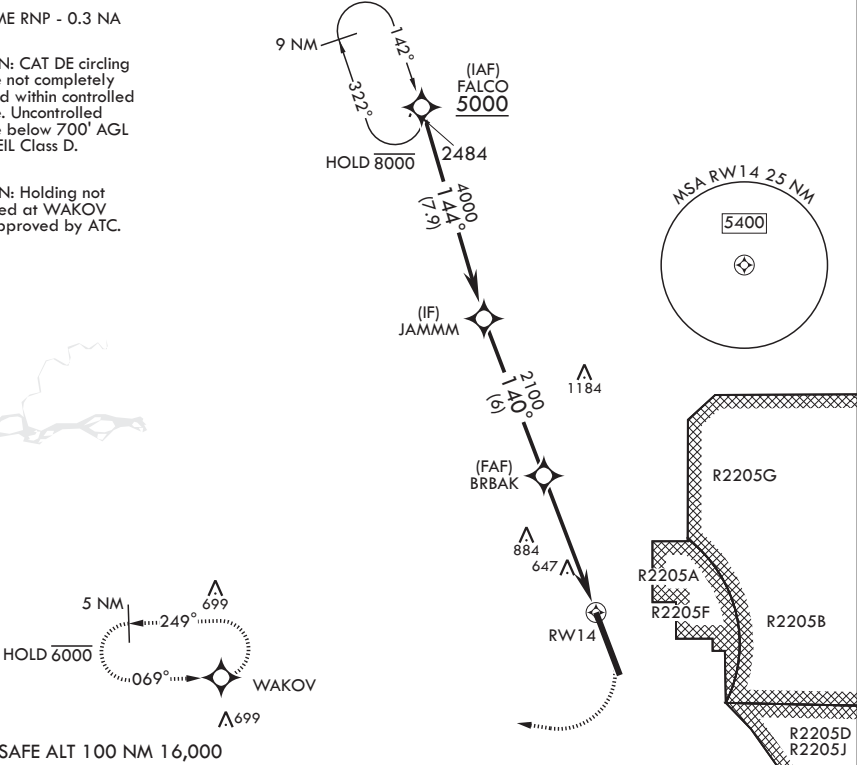
<p>▼ * When ALS inop, increase RVR to 55 and vis to 1 mile. ** Circling not authorized E Rwy 14-32.</p>	<p>ALSF-1</p> 	<p>MISSED APPROACH: Climb to 1100 then climbing right turn to 4000 direct WAKOV and hold, continue climb-in-hold to 4000.</p>
---	---	---

ATIS★ 119.9 273.5	FAIRBANKS APP CON 125.35 363.2 180°-359° 127.1 251.1 360°-179°	TOWER★ 127.2 352.05	GND CON 121.8 275.8	CLNC DEL 343.7
----------------------	--	------------------------	------------------------	-------------------

DME/DME RNP - 0.3 NA

CAUTION: CAT DE circling airspace not completely contained within controlled airspace. Uncontrolled airspace below 700' AGL outside EIL Class D.

CAUTION: Holding not authorized at WAKOV unless approved by ATC.



FALCO			JAMMM			BRBAK			WAKOV			ELEV 548			TDZE 537		
5000			4000			2100			1.4 NM to RW14			RW14			Rwy lgt on S 3200' of rwy 150' wide.		
						2.73° ≥ TCH 54			5.2 NM						Rwy lgt on N 11,314' of rwy 300' wide.		
															TWR 662		
															BCN 660		
															HIRL all rwys		
CATEGORY			A			B			C			D			E		
LNAV MDA*			1000/24			463 (500-½)			1000/50			463			(500-1)		
CIRCLING**			1000-1			1040-1			1040-1½			1280-2¼			1280-2½		
			452 (500-1)			492 (500-1)			492 (500-1½)			732 (800-2¼)			732 (800-2½)		

FAIRBANKS, ALASKA

64°40'N - 147°06'W

EIELSON AFB (PAEI)

Amdt 6 17JUN21

RNAV (GPS) RWY 14

AK, 07 AUG 2025 to 02 OCT 2025

AK, 07 AUG 2025 to 02 OCT 2025