

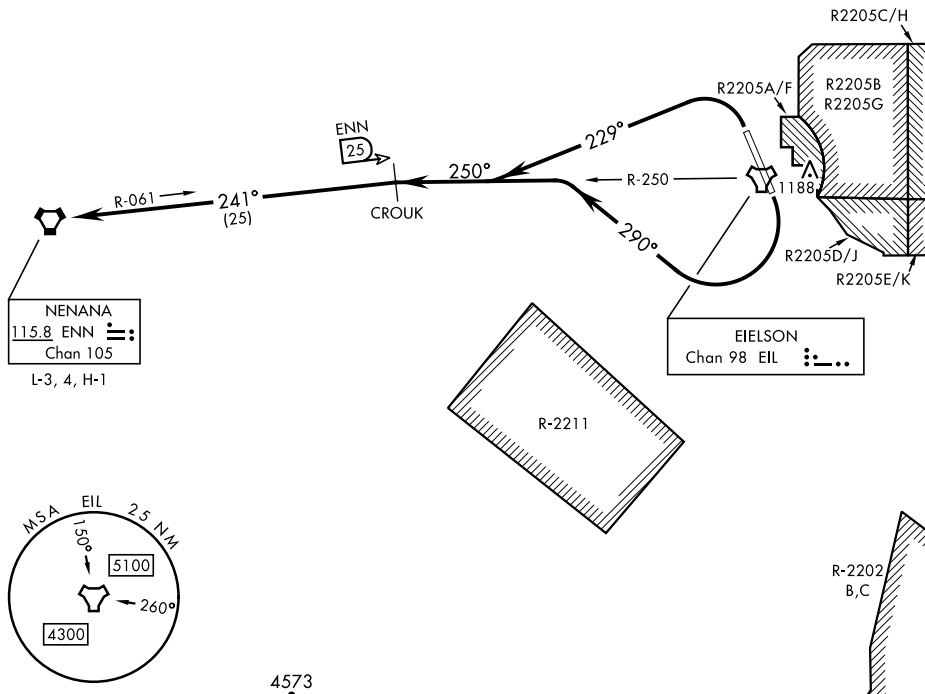
NENANA SIX DEPARTURE (NENNA6•ENN)

FAIRBANKS, ALASKA

ATIS ★ 119.9 273.5
 CLNC DEL
 343.7
 GND CON
 121.8 275.8
 TOWER ★
 127.2 352.05
 FAIRBANKS DEP CON
 127.1 251.1

AL-1729 [USAF]

CAUTION: Mountainous terrain
East of Eielson AFB and South
of departure route.



DEPARTURE ROUTE DESCRIPTION

TAKEOFF RWY 14: Turn right heading 290° to intercept EIL TACAN R-250 outbound to CROUK and climb to assigned altitude, thence...

TAKEOFF RWY 32: Turn left heading 229° to intercept EIL TACAN R-250 outbound to CROUK and climb to assigned altitude, thence...

...intercept ENN VORTAC R-061 inbound to NENANA then via assigned route.

NENANA SIX DEPARTURE (NENNA6•ENN)

Orig 15JUN23

FAIRBANKS, ALASKA
EIELSON AFB (PAEI)

AK, 07 AUG 2025 to 02 OCT 2025

AK, 07 AUG 2025 to 02 OCT 2025