

ILS Y or LOC/DME Y RWY 32

LOC I-EAF 109.9	APCH CRS 320°	Rwy ldg TDZE Arprt Elev 14,529 548 548
---------------------------	-------------------------	--

[USAF]

EIELSON AFB (PAEI)

ATC or RADAR required HRDNG to BOGIE.

▲ * When ALS inop, increase RVR to 40 and vis to ¾ mile.
** When ALS inop, increase CAT AB RVR to 55, vis to 1 mile; CAT CDE RVR to 60, vis to 1½ mile.

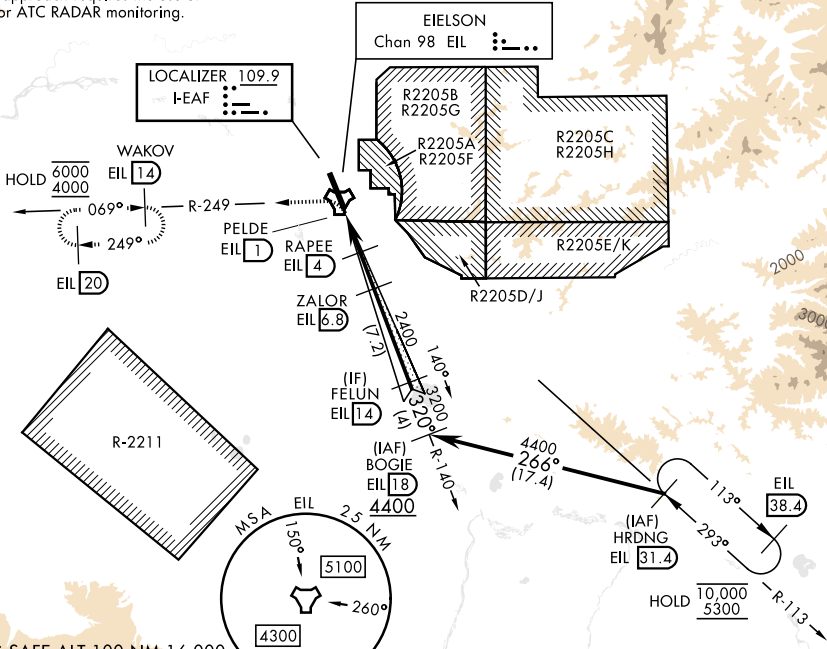


MISSED APPROACH: Climbing left turn on EIL R-249 to 4000 to WAKOV and hold. Continue climb-in-hold.

ATIS ★ 119.9 273.5	FAIRBANKS APP CON 127.1 251.1 360° - 179° 125.35 363.2 180° - 359°	TOWER ★ 127.2 352.05	GND CON 121.8 275.8	CLNC DEL 343.7
------------------------------	--	--------------------------------	-------------------------------	--------------------------

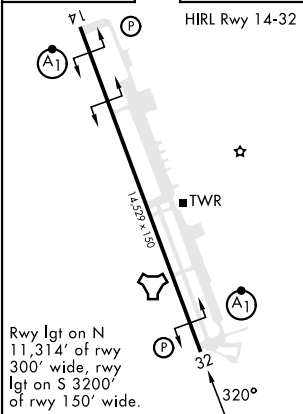
*** Circling not authorized E of Rwy 14-32.

Missed approach requires the use of RNAV or ATC RADAR monitoring.

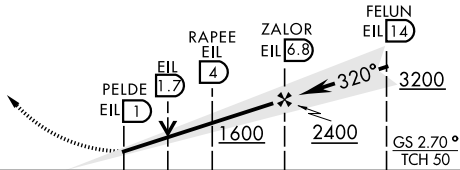
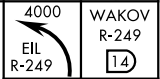


EMERG SAFE ALT 100 NM 16,000

ELEV	548	TDZE	548
------	------------	------	------------



VGSI and ILS glidepath not coincident (VGSI angle 2.70/TCH 44).



CATEGORY	A	B	C	D	E
S-ILS 32*	748/24 200 (200-½)				
S-LOC 32**	960/24 412 (500-½)	960/40 412 (500-¾)			
CIRCLING ***	1000-1 452 (500-1)	1040-1 492 (500-1)	1040-1½ 492 (500-1½)	1280-2¼ 732 (800-2¼)	1280-2½ 732 (800-2½)

ILS Y or LOC/DME Y RWY 32