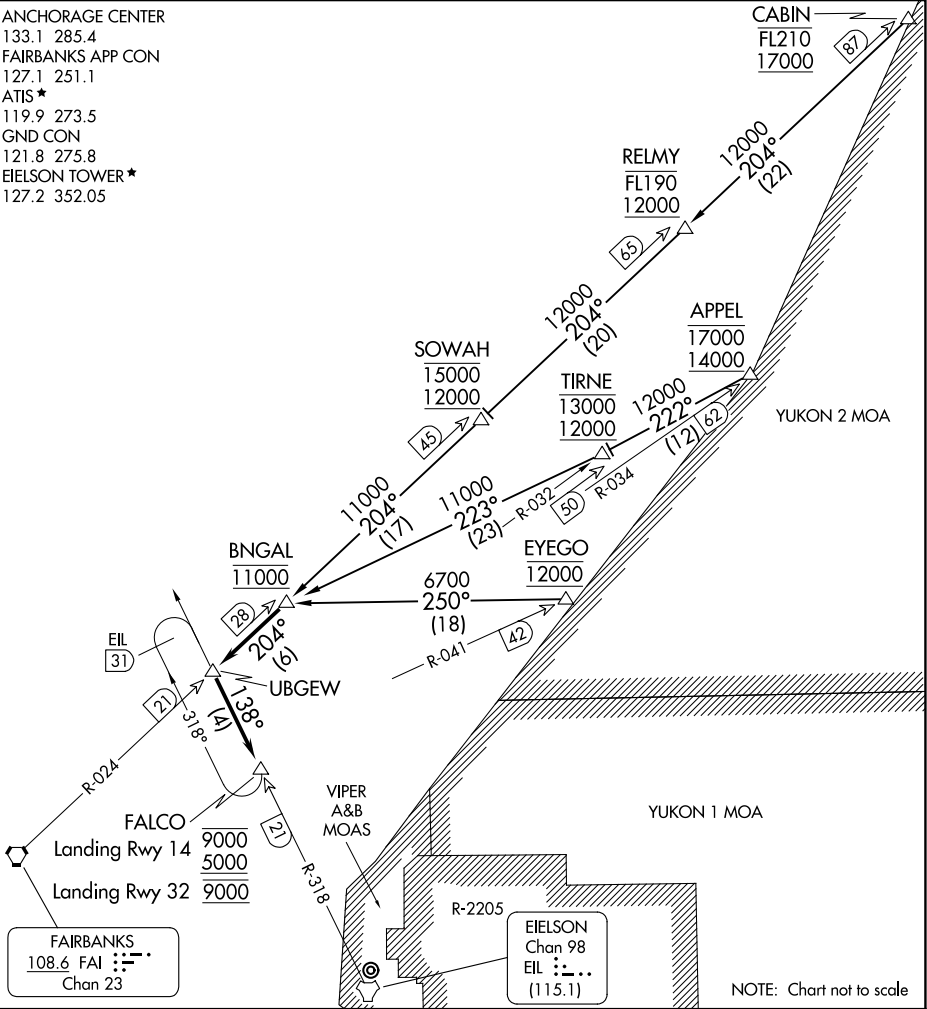


FALCO FIVE ARRIVAL

AL-1729 (FAA)

EIELSON AFB (PAEI)
FAIRBANKS, ALASKA

ANCHORAGE CENTER
133.1 285.4
FAIRBANKS APP CON
127.1 251.1
ATIS ★
119.9 273.5
GND CON
121.8 275.8
EIELSON TOWER ★
127.2 352.05



ARRIVAL ROUTE DESCRIPTION

APPEL TRANSITION (APPEL.FALCO5): From over APPEL/FAI 62 DME via heading 222° to TIRNE/FAI 50 DME then via heading 223° to BNGAL/FAI 28 DME. Thence. . .

CABIN TRANSITION (CABIN.FALCO5): From over CABIN/FAI 87 DME via FAI R-024 to BNGAL/FAI 28 DME. Thence. . .

EYEGO TRANSITION (EYEGO.FALCO5): From over EYEGO/FAI 42 DME via heading 250° to BNGAL/FAI 28 DME. Thence. . .

. . . via FAI R-024 to UBGWE/FAI 21 DME and EIL R-318 to FALCO/EIL 21 DME. Expect IFR or VFR recovery clearance at BNGAL. Landing Rwy 14 cross FALCO at or below 9000 and at or above 5000. Landing Rwy 32 cross FALCO at 9000.

FALCO FIVE ARRIVAL