

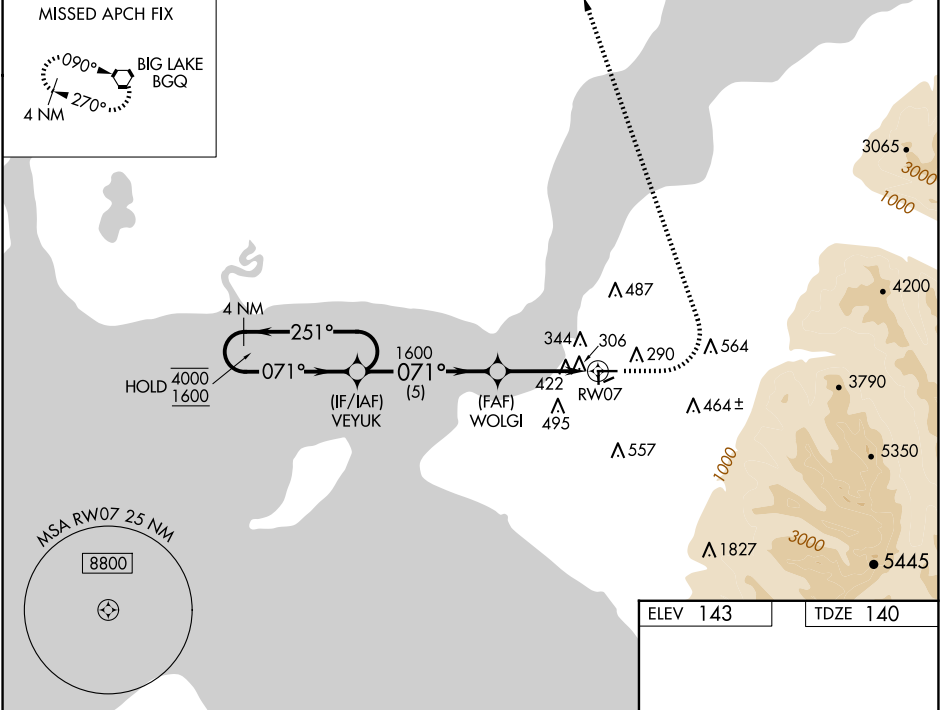
WAAS CH 67473 W07B	APP CRS 071°	Rwy Idg TDZE 140 Apt Elev 143
--	------------------------	---

RNAV (GPS) Y RWY 7

MERRILL FLD (MRI) (PAMR)

RNP APCH - GPS.		MISSED APPROACH: Climb to 1000 then climbing left turn to 2000 direct BGQ VORTAC and hold.
RADAR required for procedure entry.		
<div><div><div><div><div></div><div></div></div><div><div></div><div></div></div></div><div><div><div></div></div><div><div></div></div></div></div><div><div><div></div></div><div><div></div></div></div></div> <div>When local altimeter setting not received, use Ted Stevens Anchorage Intl altimeter setting and increase LPV DA to 801 feet. Increase all MDAs 20 feet. Helicopter visibility reduction below 1 SM NA. Circling Rwy 16, 34, 5 and 23 NA at night.</div>		

ATIS 124.25	ANCHORAGE APP CON 119.1 363.2	MERRILL TOWER ★ 126.0 (CTAF) 0	GND CON 121.7	UNICOM 122.95
-----------------------	---	--	-------------------------	-------------------------



4 NM Holding Pattern		VEYUK	WOLGI	1000	2000	BGQ		
4000 1600		251° 071°	071° 1600	RW07				
GP 3.75° TCH 43		5 NM						
CATEGORY	A	B	C	D	<div></div>			
LPV DA	788-1 $\frac{7}{8}$	648 (700-1 $\frac{7}{8}$)	NA					
LNAV MDA	680-1	540 (600-1)	NA					
CIRCLING	740-1 597 (600-1)	800-1 657 (700-1)	NA					

071°

TWR 194

9L

0.3% UP

4000 X 100

25

2600 X 75

0.3% UP

34

2000 X 60

23

REIL Rwy 7, 16, 25, and 34

MIRL Rwy 7-25 and 16-34