

BETTLES, ALASKA

AL-1501 (FAA)

24361

APP CRS 191°	Rwy Idg 5190 TDZE 647 Apt Elev 647
------------------------	---

RNAV (GPS) RWY 20
BETTES(BTT)(PABT)

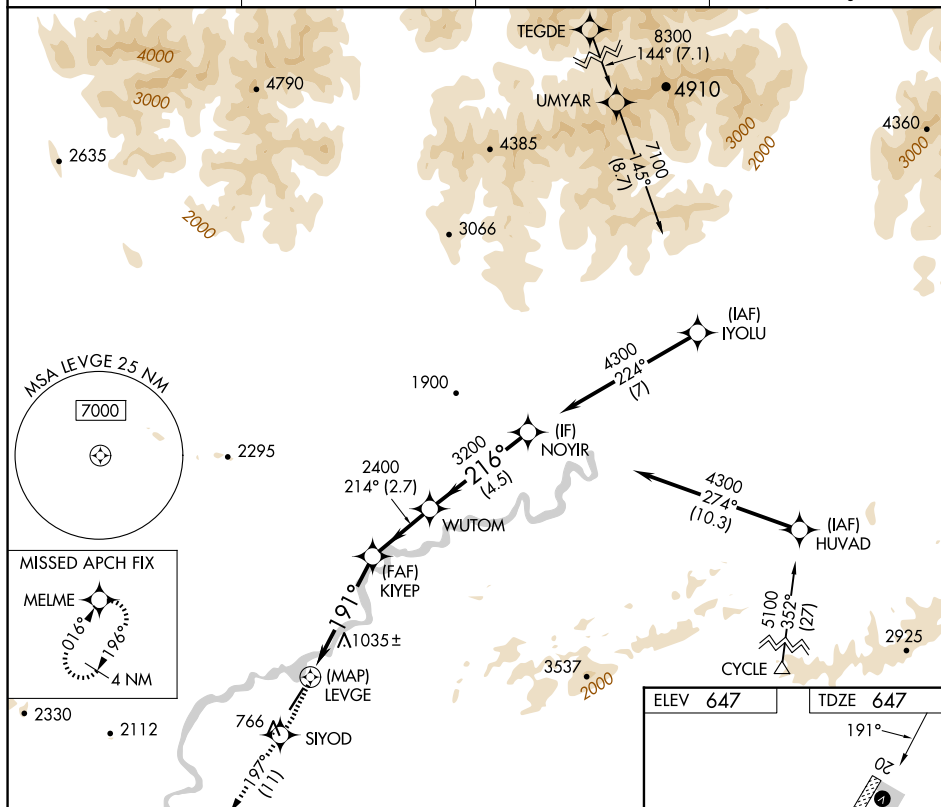
RNP APCH.



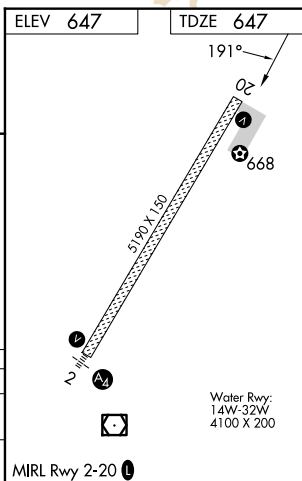
Circling NA east of Rwy 2-20. Rwy 20 helicopter visibility reduction below $\frac{3}{4}$ SM NA.

MISSED APPROACH: Climb to 3200 direct SIYOD and on track 197° to MELME and hold.

ASOS 135.45	ANCHORAGE CENTER 124.6 352.0	FAIRBANKS RADIO 122.2	CTAF 122.9
-----------------------	--	---------------------------------	----------------------



3200 ↑	SIYOD ✦	tr 197° ✦	MELME ✦	KIYEP ✦				WUTOM ✦	NOYIR ✦
CATEGORY	A		B		C		D		
LNAV MDA	1300-1 653 (700-1)		1300-1 653 (700-1)		1300-1 653 (700-1)		1300-1 653 (700-1)		
CIRCLING	1300-1 653 (700-1)		1320-2 673 (700-2)		1320-2 673 (700-2)		1320-2 673 (700-2)		



BETTLES, ALASKA
Amdt 1 24MAY18

66°55'N-151°32'W

BETTLES(BTT)(PABT)
RNAV (GPS) RWY 20

AK, 07 AUG 2025 to 02 OCT 2025