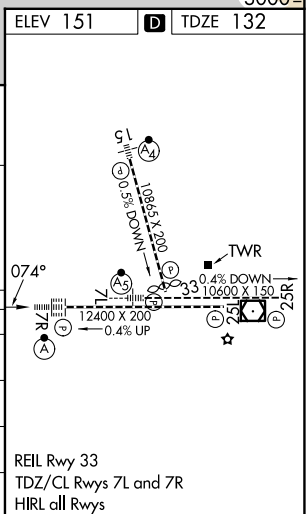
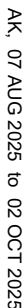


RNAV (GPS) Y RWY 7R
TED STEVENS ANCHORAGE INTL (ANC) (PANC)

MISSED APPROACH: Climb to 900 then climbing right turn to 3000 direct JUKEP and hold.

CLNC DEL
119.4 323.1



REIL Rwy 33
TDZ/CL Rwy 7L and 7R
HIRL all Rwys