

APP CRS  
074°

Rwy Ldg  
12400

TDZE  
132

Apt Elev  
151

RNAV (RNP) Z RWY 7R

TED STEVENS ANCHORAGE INTL (ANC) (PANC)

RNP AR APCH, RF required.

Missed approach requires RNP less than 1.0.

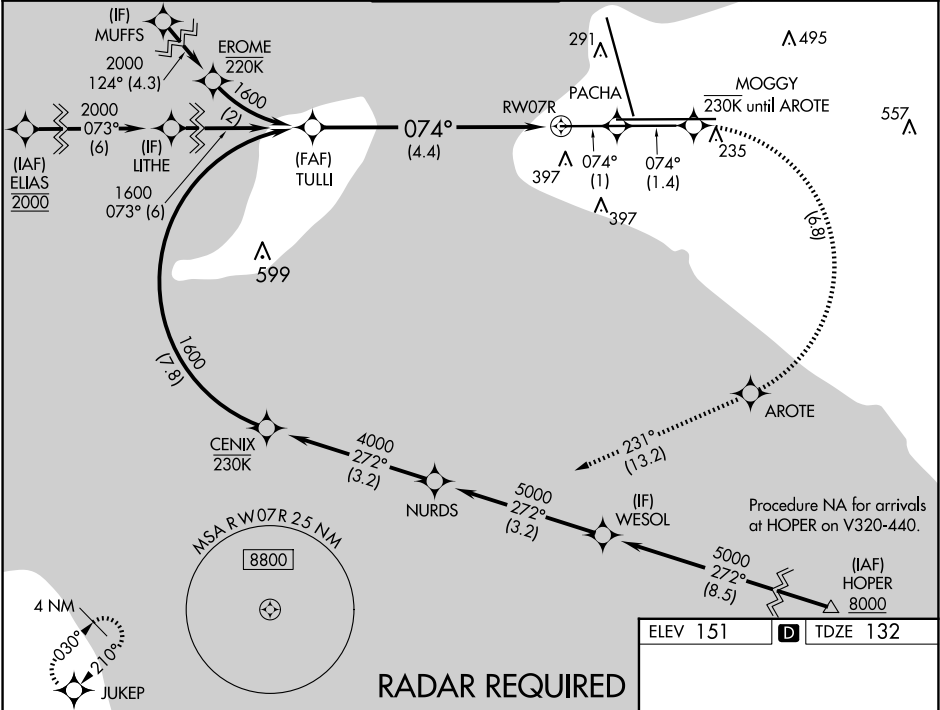
For uncompensated Baro-VNAV systems, procedure NA below -18°C (0°F) or above 54°C (130°F).

For inop ALS, increase RNP 0.30 all Cats visibility to 1½ SM.

ALSF-2

MISSED APPROACH: Climb to 3000 on the missed approach route to JUKEP and hold.

D-ATIS 135.5	ANCHORAGE APP CON 118.6 290.5	ANCHORAGE TOWER 118.3 257.8	GND CON 121.9 338.25	CLNC DEL 119.4 323.1
-----------------	----------------------------------	--------------------------------	-------------------------	-------------------------



3000  
↑  
tr 074°

PACHA  
tr 074°

MOGGY

AROTE

tr 231°

JUKEP

TULLI  
1600

1600

074°

RWY 7R

4.4 NM

GP 3.00°  
TCH 55

See planview for multiple IF locations.

VGSI and RNAV glidepath not coincident  
(VGSI Angle 3.00/TCH 72).

CATEGORY	A	B	C	D
RNP 0.30 DA	562/50 430 (500-1)			

AUTHORIZATION REQUIRED

ELEV 151

TDZE 132

REIL Rwy 33

TDZ/CL Rwys 7L and 7R

HIRL all Rwys