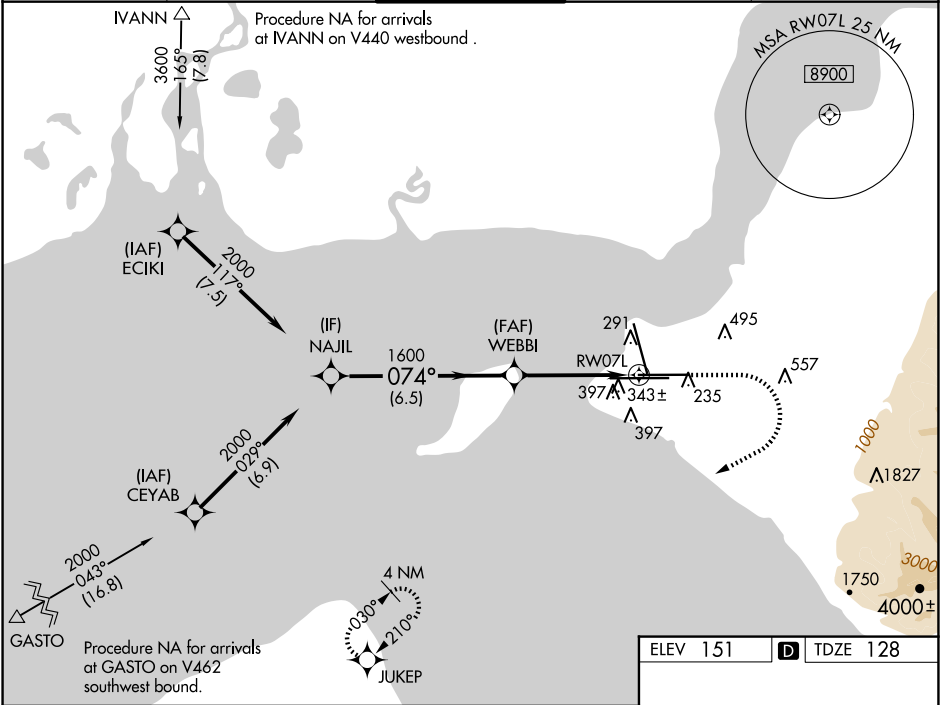


WAAS CH <b>86215</b> <b>W07B</b>	APP CRS <b>074°</b>	Rwy Ldg <b>10600</b> TDZE <b>128</b> Apt Elev <b>151</b>
--	------------------------	--

RNAV (GPS) RWY 7L  
TED STEVENS ANCHORAGE INTL (ANC) (PANC)

RNP APCH.		MALSR	MISSED APPROACH: Climb to 800 then climbing right turn to 3000 direct JUKEP and hold.	
For uncompensated Baro-VNAV systems, LNAV/VNAV NA below -18°C or above 54°C. For inop ALS, increase LNAV/VNAV all Cats and LNAV Cat C/D visibility to 1½ SM.				
D-ATIS <b>135.5</b>	ANCHORAGE APP CON <b>118.6 290.5</b>	ANCHORAGE TOWER <b>118.3 257.8</b>	GND CON <b>121.9 338.25</b>	CLNC DEL <b>119.4 323.1</b>



NAJIL VGSI and RNAV glidepath not coincident (VGSI Angle 3.00/TCH 63).				
GP 3.00° TCH 54				
6.5 NM 3.2 NM 1.3 NM				
CATEGORY	A	B	C	D
LPV DA	328/18		200 (200-½)	
LNAV/VNAV DA	595/50		467 (500-1)	
LNAV MDA	600/24 472 (500-½)		600/50 472 (500-1)	
CIRCLING	700-1 549 (600-1)		800-1¾ 920-2½ 649 (700-1¾) 769 (800-2½)	

