

LOC/DME I-ANC 111.3 Chan 50	APP CRS 074°	Rwy Ldg 12400 TDZE 132 Apt Elev 151	7R 10600 128 151	7L
---	------------------------	--	--	----

ILS or LOC RWY 7R
TED STEVENS ANCHORAGE INTL (ANC) (PANC)

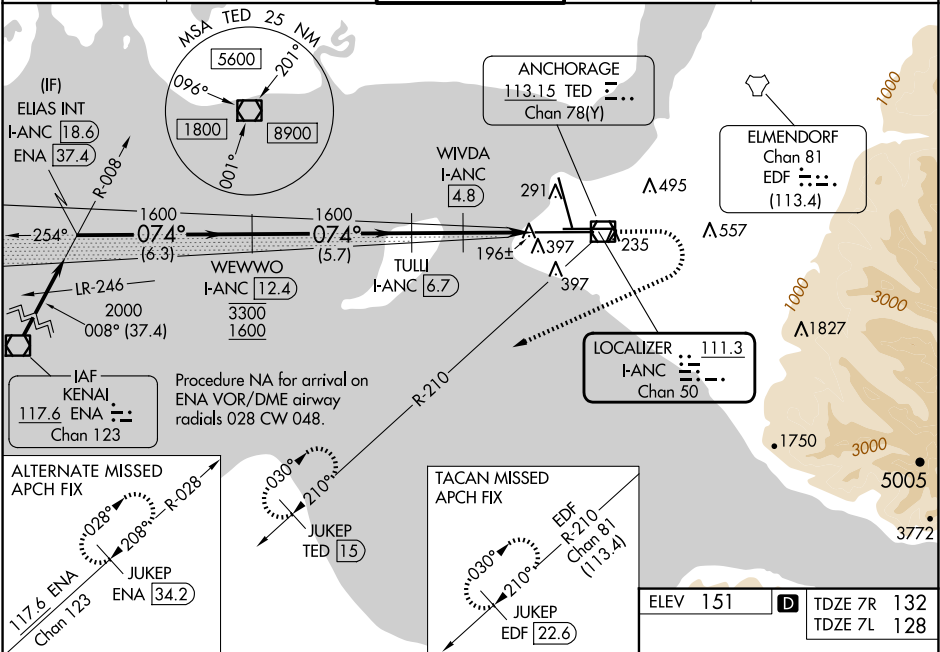
DME required.
▼
▲
❄️ -21°C

For inop ALS, increase S-ILS 7R Cat E visibility to RVR 4000, S-LOC 7R Cat E visibility to RVR 6000, and Sidestep Rwy 7L Cat E visibility to 2 SM. Rwy 7L threshold 6140 feet east of Rwy 7R threshold.

ALSIF-2 Rwy 7R
ALSIF-2 Rwy 7L

MISSED APPROACH: Climb to 780 then climbing right turn to 3000 on heading 230° and on TED VOR/DME R-210 to JUKEP/TED 15 DME and hold. (TACAN aircraft climb to 780 then climbing right turn to 3000 on heading 230° and EDF TACAN R-210 to JUKEP/EDF 22.6 DME and hold).

D-ATIS 135.5	ANCHORAGE APP CON 118.6 290.5	ANCHORAGE TOWER 118.3 257.8	GND CON 121.9 338.25	CLNC DEL 119.4 323.1
------------------------	---	---------------------------------------	--------------------------------	--------------------------------



CATEGORY		A	B	C	D	E
S-ILS 7R		332/18 200 (200-½)				
S-LOC 7R		520/24	388 (400-½)	520/35 388 (400-¾)		
SIDESTEP 7L		520/55 392 (400-1)		520-1½ 392 (400-1½)		
CIRCLING		700-1 549 (600-1)	800-1¾ 649 (700-1¾)	920-2½ 769 (800-2½)	920-2¾ 769 (800-2¾)	

REIL Rwy 33
TDZ/CL Rwy 7L and 7R
HIRL all Rwy 7s