

LOC/DME I-TGN 109.9 Chan 36	APP CRS 074°	Rwy Ldg 10600 TDZE 128 Apt Elev 151
---	------------------------	--

ILS or LOC RWY 7L

TED STEVENS ANCHORAGE INTL (ANC)(PANC)

DME required.



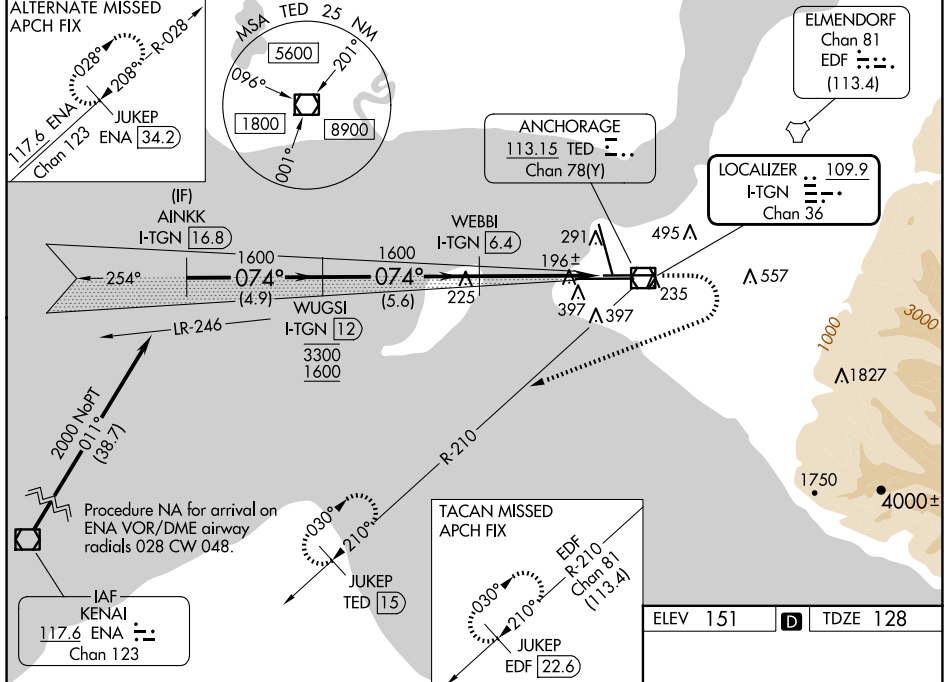
For inop ALS, increase S-ILS 7L Cat E visibility to RVR 4000, S-LOC 7L Cats C, D and E visibility to RVR 5500.

MALSI

MISSED APPROACH: Climb to 600 then climbing right turn to 3000 on heading 230° and TED VOR/DME R-210 to JUKEP/TED 15 DME and hold. (TACAN aircraft climb to 600 then climbing right turn to 3000 on heading 230° on EDF TACAN R-210 to JUKEP/EDF 22.6 DME and hold).

D-ATIS 135.5	ANCHORAGE APP CON 118.6 290.5	ANCHORAGE TOWER 118.3 257.8	GND CON 121.9 338.25	CLNC DEL 119.4 323.1
------------------------	---	---------------------------------------	--------------------------------	--------------------------------

ALTERNATE MISSED
APCH FIX



AK, 07 AUG 2025 to 02 OCT 2025

AK 07 AUG 2025 to 02 OCT 2025

VGSI and ILS glidepath not coincident.
(VGSI Angle 3.00/TCH 63).

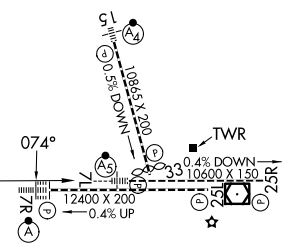
AINKK I-TGN (16.8) WUGSI I-TGN (12) WEBBI I-TGN (6.4) I-TGN (2.9) I-TGN (1.9)

2000 074° 3300 1600 1600 1600

GS 3.00° TCH 54

4.9 NM 5.6 NM 3.5 NM 1 NM

CATEGORY	A	B	C	D	E
S-ILS 7L	328/18 200 (200-½)				
S-LOC 7L	500/24 372 (400-½)	500/30 372 (400-¾)			
CIRCLING	700-1 549 (600-1)	800-1¾ 649 (700-1¾)	920-2½ 769 (800-2½)	920-2¾ 769 (800-2¾)	



REIL Rwy 33
TDZ/CL Rwy 7L and 7R
HIRL all Rwy's