

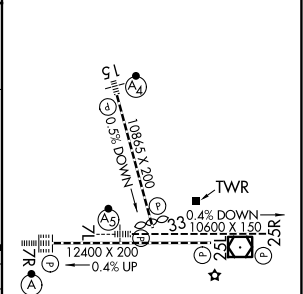
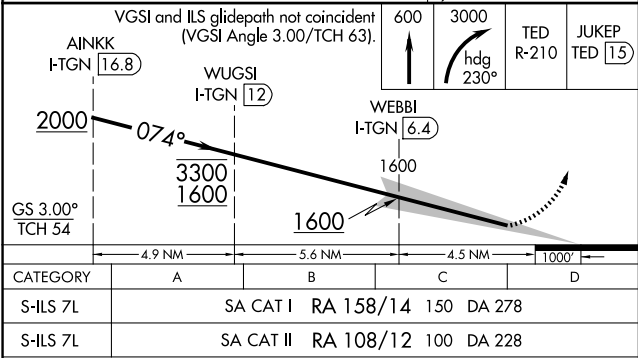
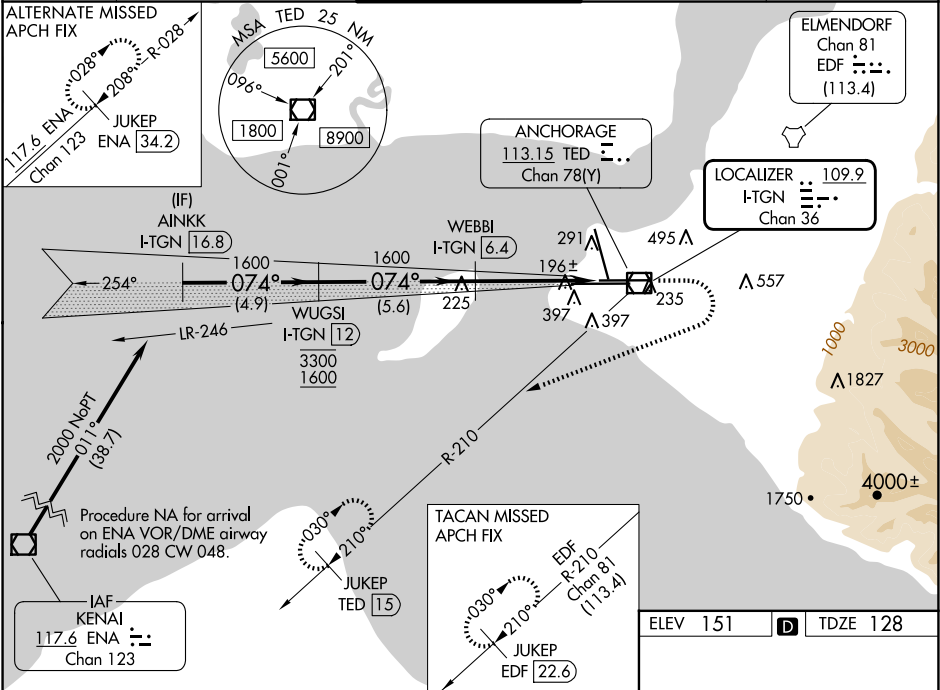
LOC/DME I-TGN	APP CRS	Rwy Ldg
<b>109.9</b>	<b>074°</b>	<b>10600</b>
Chan <b>36</b>		TDZE <b>128</b>
		Apt Elev <b>151</b>

ILS RWY 7L (SA CAT I & II)

TED STEVENS ANCHORAGE INTL (ANC)(PANC)

DME required.	MALSR	MISSED APPROACH: Climb to 600 then climbing right turn to 3000 on heading 230° and TED VOR/DME R-210 to JUKEP/ TED 15 DME and hold. (TACAN aircraft climb to 600 then climbing right turn to 3000 on heading 230° on EDF TACAN R-210 to JUKEP/EDF 22.6 DME and hold).
SA CAT I: Requires specific OPSPEC, MSPEC or LOA approval. SA CAT II: Requires specific OPSPEC, MSPEC or LOA approval.		

D-ATIS	ANCHORAGE APP CON	ANCHORAGE TOWER	GND CON	CLNC DEL
<b>135.5</b>	<b>118.6 290.5</b>	<b>118.3 257.8</b>	<b>121.9 338.25</b>	<b>119.4 323.1</b>



SA CATEGORY I & II ILS - SPECIAL AIRCREW & AIRCRAFT CERTIFICATION REQUIRED			
CATEGORY	A	B	C
S-ILS 7L	SA CAT I	RA 158/14	150 DA 278
S-ILS 7L	SA CAT II	RA 108/12	100 DA 228

REIL Rwy 33  
TDZ/CL Rwy 7L and 7R  
HIRL all Rwy's