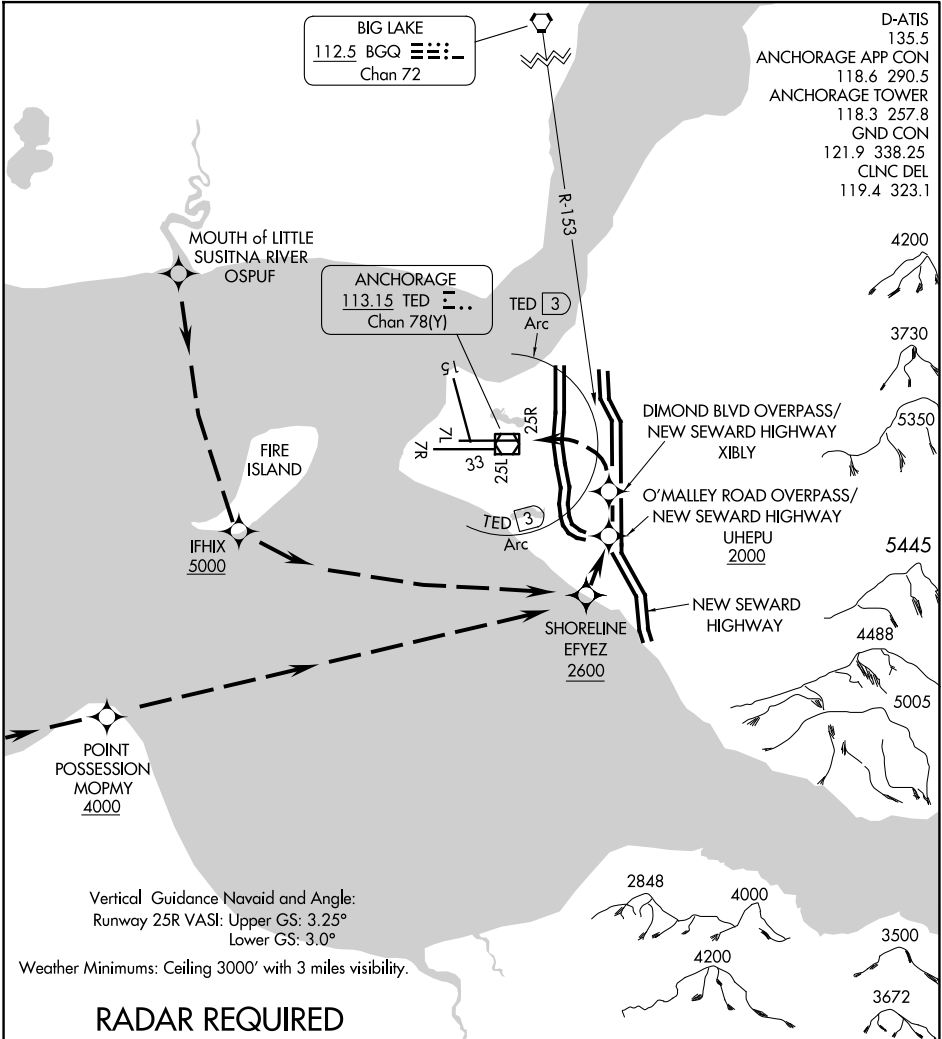


HIGHWAY VISUAL RWY 25R

TED STEVENS ANCHORAGE INTL (ANC) (PANC)
AL-1500 (FAA) ANCHORAGE, ALASKA



Vertical Guidance Navaid and Angle:
Runway 25R VASI: Upper GS: 3.25°
Lower GS: 3.0°
Weather Minimums: Ceiling 3000' with 3 miles visibility.

RADAR REQUIRED

NM	1	2	3	4	5	6	7	8	9	10	11	12	13	14	15	16	17	18	19	20	21	22	23	24	25	26
----	---	---	---	---	---	---	---	---	---	----	----	----	----	----	----	----	----	----	----	----	----	----	----	----	----	----

HIGHWAY VISUAL RWY 25R
PROCEDURE NOT AUTHORIZED AT NIGHT

HIGHWAY VISUAL RWY 25R

Amdt 1 09FEB12

61°10'N-150°00'W ANCHORAGE, ALASKA
TED STEVENS ANCHORAGE INTL (ANC) (PANC)

AK, 07 AUG 2025 to 02 OCT 2025

AK, 07 AUG 2025 to 02 OCT 2025