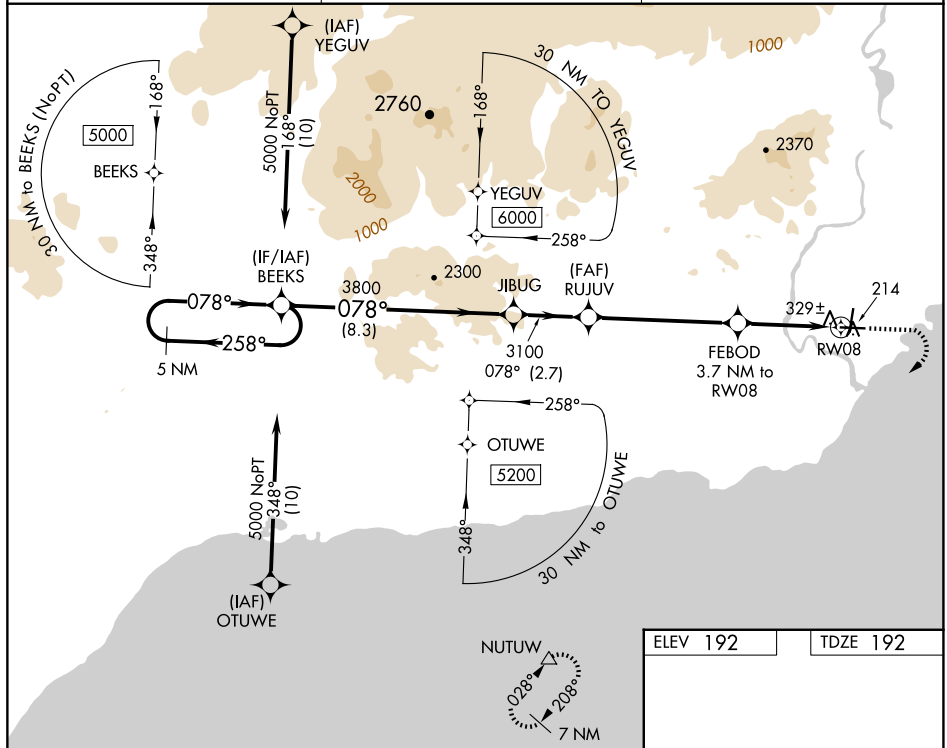


APP CRS <b>078°</b>	Rwy Idg <b>5086</b> TDZE <b>192</b> Apt Elev <b>192</b>
------------------------	---

RNAV (GPS) RWY 8  
ILAMNA (ILI) (PAIL)

RNP APCH - GPS.		MISSED APPROACH: Climb to 600, then climbing right turn to 7000 direct NUTUW and hold, continue climb-in-hold 7000.
▼	When local altimeter setting not received, procedure NA.	
▲	Rwy 8 helicopter visibility reduction below $\frac{3}{4}$ SM NA.	
❄ -26°C	Circling NA to waterways N, S, E, W.	

AFIS ★ <b>134.95</b>	ANCHORAGE CENTER <b>118.8</b>	ILIAMNA RADIO <b>123.6</b> (CTAF) <b>0</b>
-------------------------	----------------------------------	---



<div>5 NM Holding Pattern</div> <div><div><div>BEEKS</div><div>JIBUG</div><div>RUJUV</div><div>FEBOD 3.7 NM to RW08</div><div>1.1 NM to RW08</div></div><div><div>5000</div><div>3800</div><div>3100</div><div>1400</div></div><div><div>← 258°</div><div>078° →</div><div>078°</div><div>3.00° TCH 35</div></div><div><div>8.3 NM</div><div>2.7 NM</div><div>5.3 NM</div><div>2.6 NM</div><div>1.1</div></div></div> <div><div>600</div><div>7000</div><div>NUTUV</div></div>				
CATEGORY	A	B	C	D
LNAV MDA	580-1	388 (400-1)	580-1½	388 (400-1½)
<b>C</b> CIRCLING	740-1	548 (600-1)	820-1¾ 628 (700-1¾)	1700-3 1508 (1600-3)

