

WAAS CH <b>82110</b> <b>W36A</b>	APP CRS <b>355°</b>	Rwy Idg <b>4800</b> TDZE <b>179</b> Apt Elev <b>192</b>
--	------------------------	---

RNAV (GPS) RWY 36

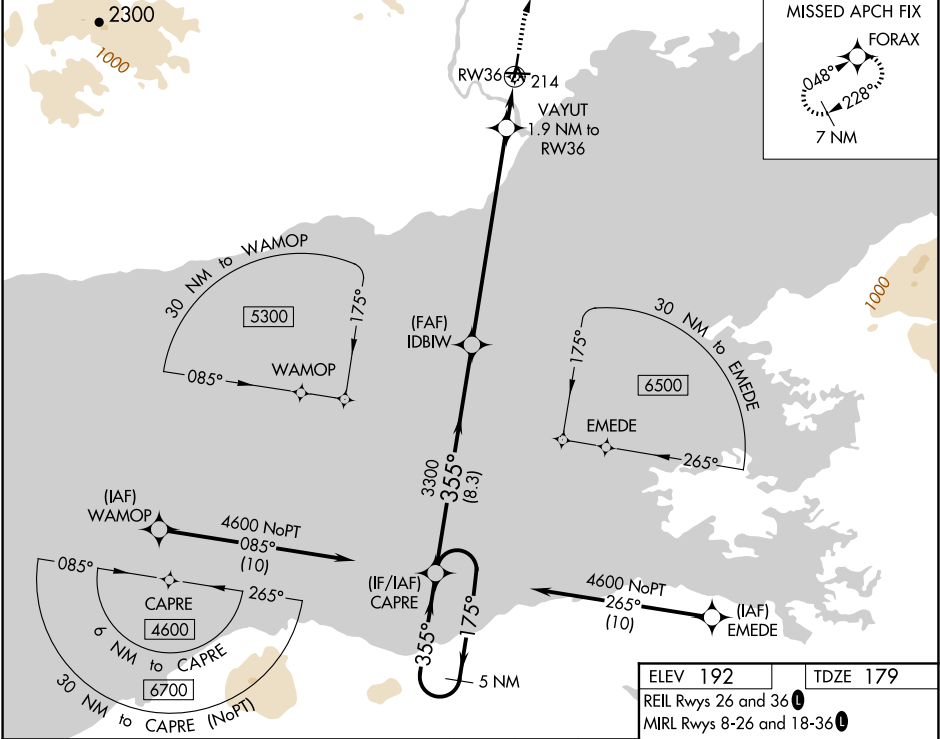
ILIAMNA (ILI) (PAIL)

RNP APCH - GPS.

For uncompensated Baro-VNAV systems, procedure NA below -21°C or above 54°C. When local altimeter setting not received, procedure NA. Circling NA to waterways N, S, E, W.

MISSED APPROACH: Climb to 640 then climbing right turn to 8400 direct FORAX and hold, continue climb-in-hold to 8400.

AFIS ★ <b>134.95</b>	ANCHORAGE CENTER <b>118.8</b>	ILIAMNA RADIO <b>123.6</b> (CTAF) <b>0</b>
-------------------------	----------------------------------	---



5 NM Holding Pattern

4600 ← 175° → 355° → 355° → 3300

GP 3.00° TCH 32

8.3 NM 7.8 NM 0.9 NM 1 NM

CATEGORY

LPV DA	429-1		250 (300-1)
LNAV/VNAV DA	462-1		283 (300-1)
LNAV MDA	540-1		361 (400-1)

8400

FORAX

3300 800

VAYUT 1.9 NM to RW36

1 NM to RW36

RW36

ELEV 192 TDZE 179

REIL Rwy 26 and 36

MIRL Rwy 8-26 and 18-36

WATER RWYS

N-S 2892 X 400

E-W 2998 X 400

355°