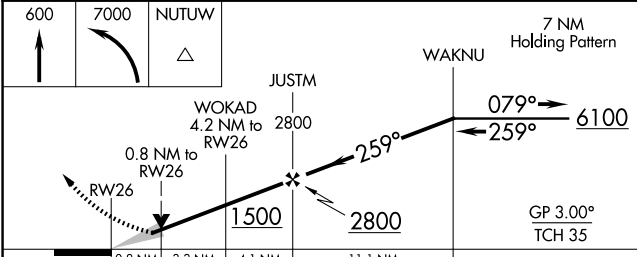
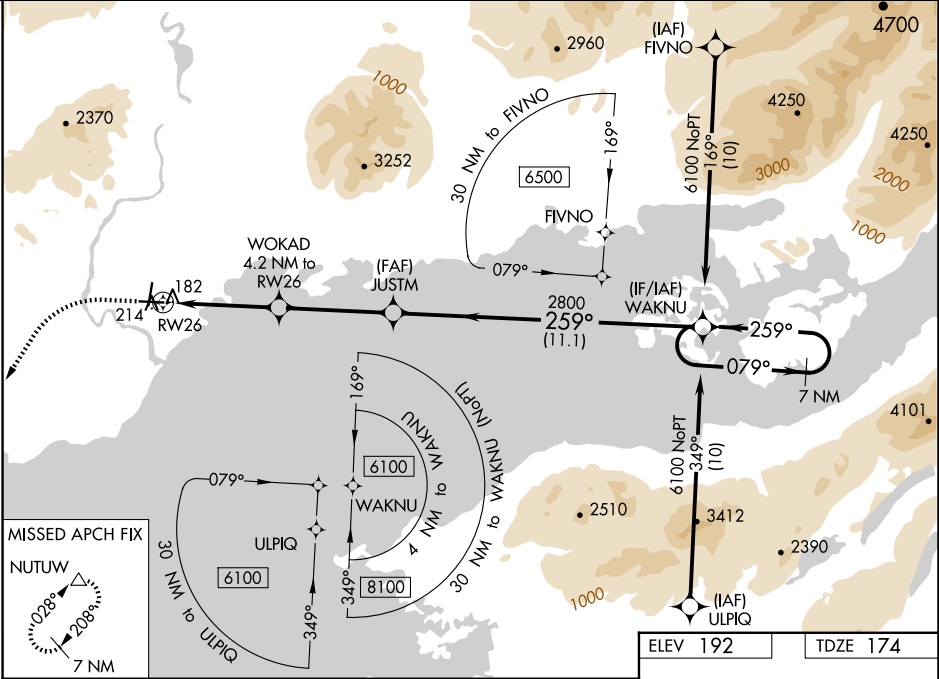


WAAS CH 45910 W26A	APP CRS 259°	Rwy Idg TDZE 174 Apt Elev 192
--	------------------------	---

RNAV (GPS) RWY 26

ILIAMNA (ILI) (PAIL)

RNP APCH - GPS.		MISSED APPROACH: Climb to 600, then climbing left turn to 7000 direct NUTUW and hold, continue climb-in-hold to 7000.
For uncompensated Baro-VNAV systems, procedure NA below -21°C or above 54°C. When local altimeter setting not received, procedure NA. Circling NA to waterways N, S, E, W.		
AFIS ★ 134.95	ANCHORAGE CENTER 118.8	ILIAMNA RADIO 123.6 (CTAF) 0



ELEV 192	TDZE 174
600	7000
NUTUW	
WAKNU	7 NM Holding Pattern
JUSTM	
WOKAD 4.2 NM to RW26	
0.8 NM to RW26	
1500	2800
2800	6100
GP 3.00°	TCH 35
0.8 NM	3.3 NM
4.1 NM	11.1 NM
CATEGORY	A B C D
LPV DA	424-1 250 (300-1)
LNAV/VNAV DA	424-1 250 (300-1)
LNAV MDA	440-1 266 (300-1)
CIRCLING	740-1 548 (600-1) 820-1 3/4 628 (700-1 3/4) 1700-3 1508 (1600-3)

