

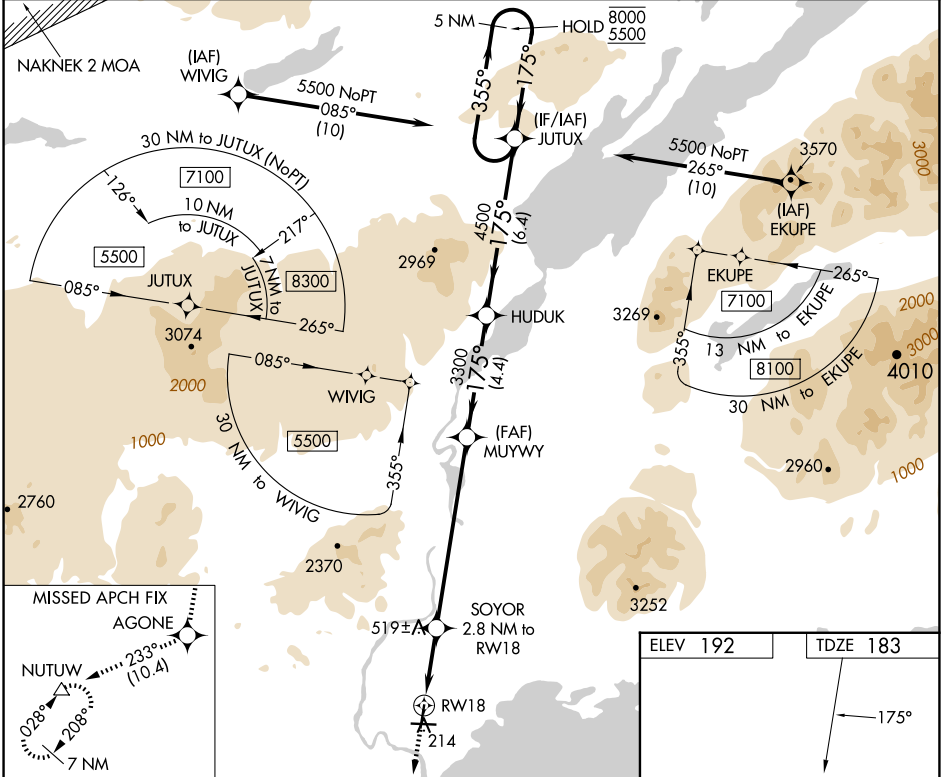
APP CRS	Rwy Idg	4800
175°	TDZE	183
	Apt Elev	192

RNAV (GPS) RWY 18

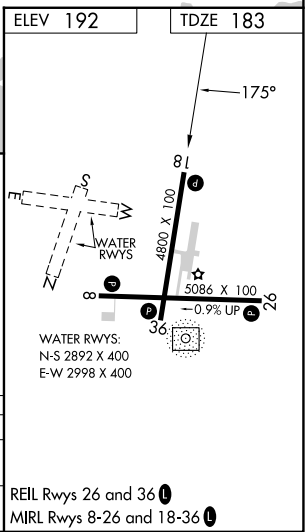
ILIAMNA (ILI) (PAIL)

RNP APCH - GPS.		MISSED APPROACH: Climb to 7000 direct AGONE and on track 233° to NUTUW and hold, continue climb-in-hold to 7000.
Rwy 18 helicopter visibility reduction below ¾ SM NA. When Iliamna altimeter setting not received, procedure NA. Circling NA to waterways N, S, E, W.		

AFIS ★	ANCHORAGE CENTER	ILIAMNA RADIO
134.95	118.8	123.6 (CTAF) 0



7000	AGONE	tr 233°	NUTUW	JUTUX	5 NM Holding Pattern
↑	✧		△		
SOYOR 2.8 NM to RW18					
MUYWY HUDUK					
RW18 1.8 NM to RW18					
1.8 NM 1 NM 6.9 NM 4.4 NM 6.4 NM					
CATEGORY	A	B	C	D	
LNVA MDA	780-1	597 (600-1)	780-1¾	597 (600-1¾)	
CIRCLING	780-1	588 (600-1)	820-1¾ 628 (700-1¾)	1700-3 1508 (1600-3)	



AK, 07 AUG 2025 to 02 OCT 2025

AK, 07 AUG 2025 to 02 OCT 2025