

SHEMYA, ALASKA

VOR/DME or TACAN RWY 10

VORTAC SYA <u>109.0</u> Chan 27	APCH CRS 092°	Rwy Idg 10,004 TDZE 98 Arpt Elev 98
---	-------------------------	--

[USAF]

EARECKSON AS (SYA) (PASY)

* When ALS inop, increase CAT AB vis to 1½ miles;
CAT CDE vis to 1⅝ miles.

** Circling not authorized N of Rwy 10-28.



MISSED APPROACH: Climb to 1200, then climbing right turn to 4200, intercept SYA R-272 direct EMLAW and hold.

ANCHORAGE CENTER

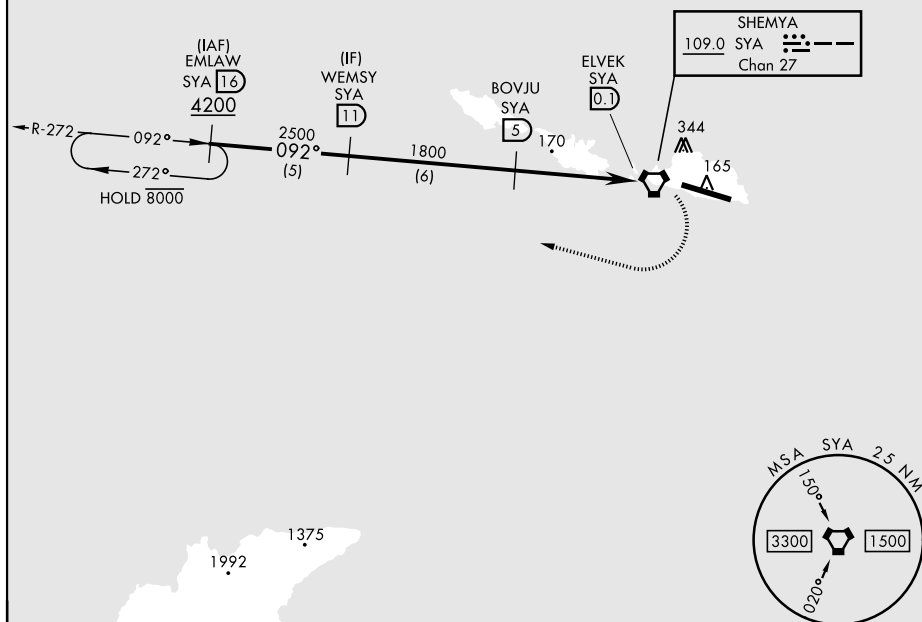
119.1 339.8

CTAF

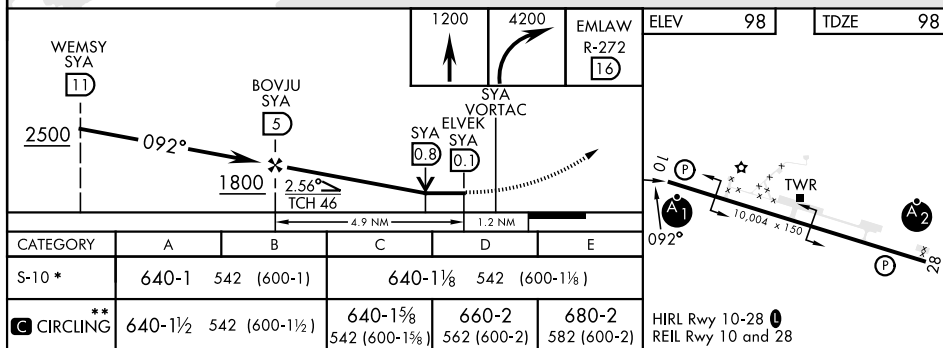
127.20 352.05

CAUTION: Numerous obstructions in area N of Rwy 10-28.

Missed approach requires use of RNAV or ATC RADAR monitoring.



EMERG SAFE ALT 100 NM 5400



SHEMYA, ALASKA

52°43'N-174°07'E

EARECKSON AS (SYA) (PASY)

Amdt 7 05SEP24

VOR/DME or TACAN RWY 10

AK, 07 AUG 2025 to 02 OCT 2025

AK, 07 AUG 2025 to 02 OCT 2025