
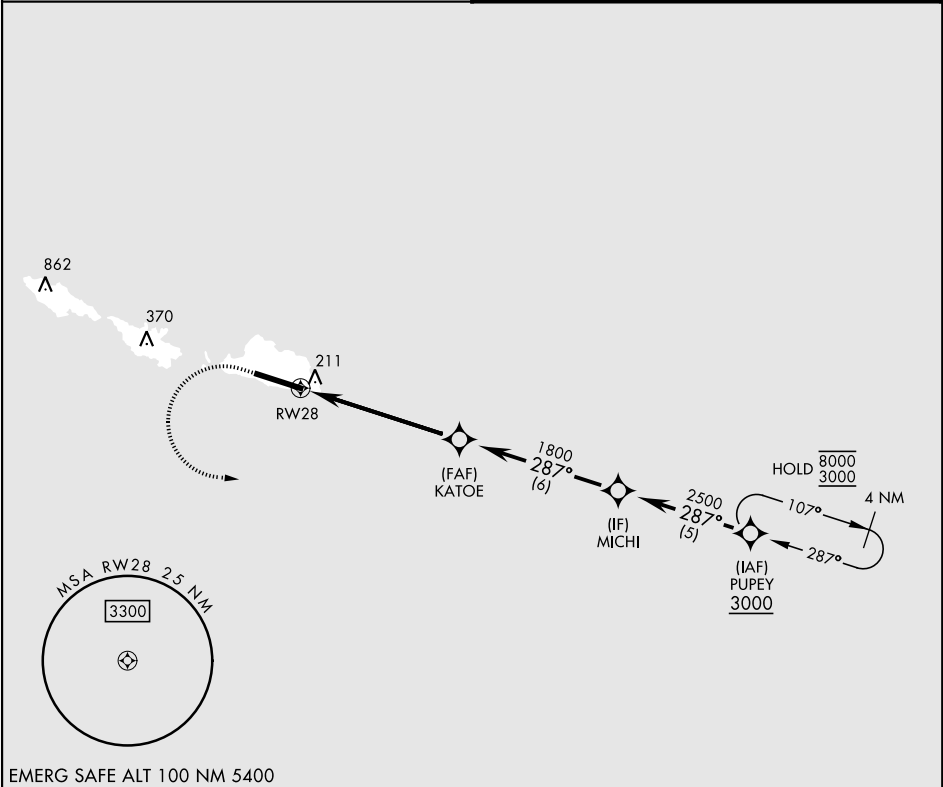


## RNAV (GPS) RWY 28

|   |  |   |  |
|---|--|---|--|
| APCH CRS<br><b>287°</b>   | Rwy ldg <b>10,004</b><br>TDZE <b>93</b><br>Arpt Elev <b>98</b> | [USAF]  | EARECKSON AS (SYA) (PASY)  |
| RNP APCH - GPS  |  | SALS<br> | MISSED APPROACH: Climb to 600, then climbing left turn to 3000, direct PUPEY and hold. |
| <p>* When ALS inop, increase CAT CDE vis to 1½ miles.<br/>         ** Circling not authorized N of Rwy 10-28.</p> |  |   |  |

|                  |                |
|------------------|----------------|
| ANCHORAGE CENTER | CTAF           |
| 119.1 339.8      | 127.2 0 352.05 |



| CATEGORY   | A                    | B                    | C                      | D                    | E                    |
|------------|----------------------|----------------------|------------------------|----------------------|----------------------|
| LNAV MDA*  | 480-1                | 480-1                | 387                    | (400-1)              |                      |
| CIRCLING** | 480-1<br>382 (400-1) | 560-1<br>462 (500-1) | 560-1½<br>462 (500-1½) | 660-2<br>562 (600-2) | 680-2<br>582 (600-2) |

HIRL Rwy 10-28  
REIL Rwy 10 and 28

AK, 07 AUG 2025 to 02 OCT 2025

AK, 07 AUG 2025 to 02 OCT 2025