
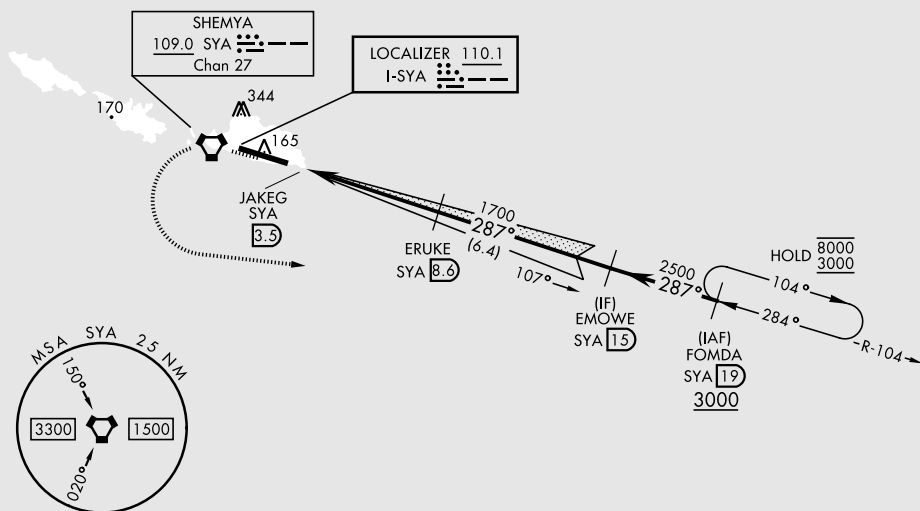


## ILS or LOC/DME RWY 28

LOC I-SYA <b>110.1</b>	APCH CRS <b>287°</b>	Rwy Idg <b>10,004</b> TDZE <b>93</b> Arpt Elev <b>98</b>	[USAF]	EARECKSON AS (SYA) (PASY)
* Circling not authorized N of Rwy 10-28.			SALS 	MISSED APPROACH: Climb to 600, then climbing left turn to 3000 direct FOMDA and hold.
ANCHORAGE CENTER <b>119.1 339.8</b>			CTAF <b>127.2 0 352.05</b>	

CAUTION: Numerous obstructions in area N of Rwy 10-28.

Missed approach requires use of RNAV or ATC RADAR monitoring.



EMERG SAFE ALT 100 NM 5400

