

TACAN BER Chan 77 (113.0)	APP CRS 233°	Rwy Ldg TDZE 17 Apt Elev 20
---	------------------------	---

TACAN RWY 23
ADAK (ADK)(PADK)

⚠ Circling NA northwest of Rwy 5-23. Rwy 23 helicopter visibility reduction below RVR 5000 NA. Straight-in Rwy 23 at night, operational VGSI required, remain on or above VGSI glidepath until threshold.

USAF only: When VGSI inop, Straight-in Rwy 23 authorized at night with command approval.

Circling NA at night - unlit terrain 21 feet MSL 200 feet from threshold, 551 feet right of centerline. For inop ALS, increase S-23* Cat C/D/E visibility to 2½ SM.

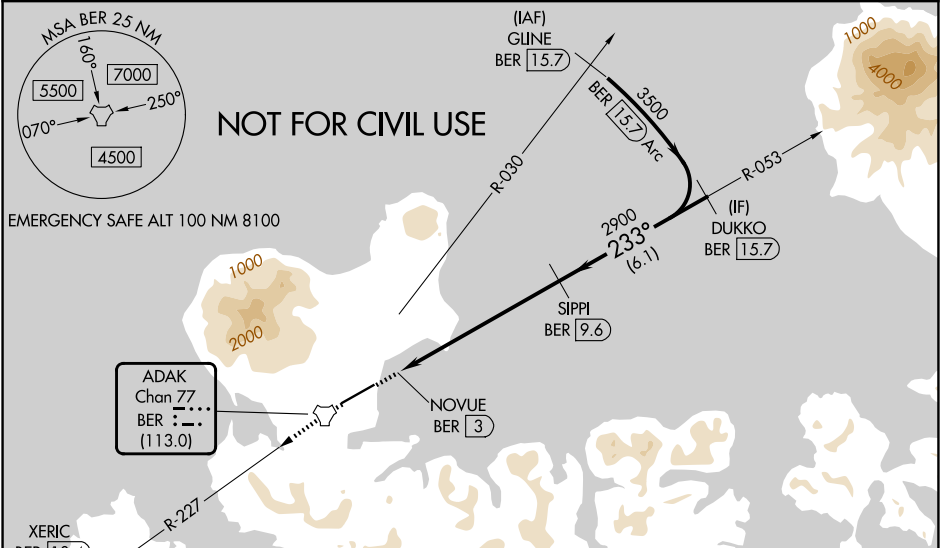
MALS

A₂

MISSED APPROACH: Climb to 4300 direct BER TACAN and continue on BER R-227 direct XERIC/BER 10.4 DME and hold, continue climb-in-hold to 4300.

*Missed approach requires minimum climb of 375 feet per NM to 2800.

AWOS-3P 134.5	ANCHORAGE CENTER 126.4 254.3	CTAF 122.9 0
-------------------------	--	------------------------



ELEV 20	TDZE 17
---------	---------

4300 BER

BER R-227

XERIC BER 10.4

NOVUE BER 3

SIPPI BER 9.6

DUKKO BER 15.7

2900 233°

3500

1 NM, 6.6 NM, 6.1 NM

≤ 3.50° TCH 53

CATEGORY	A	B	C	D	E
S-23*	800/50	783 (800-1)	800-2	783 (800-2)	
S-23	1620-1¼ 1603 (1600-1¼)	1620-1½ 1603 (1600-1½)	1620-3	1603 (1600-3)	
CIRCLING	1620-1¼ 1600 (1600-1¼)	1620-1½ 1600 (1600-1½)	1620-3 1600 (1600-3)	2440-3	2420 (2500-3)

REIL Rwy 23

HIRL Rwy 5-23

AK, 07 AUG 2025 to 02 OCT 2025

AK, 07 AUG 2025 to 02 OCT 2025