

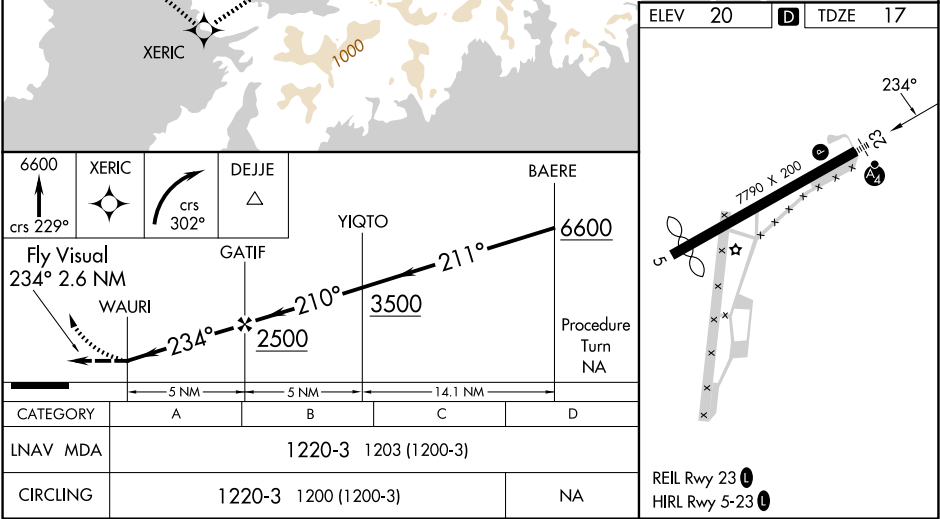
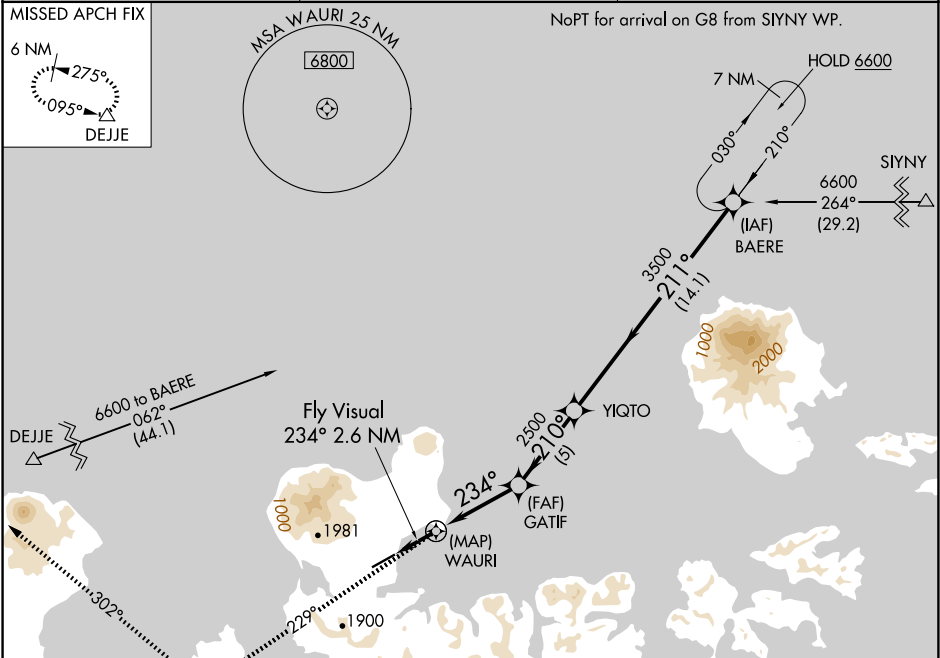
APP CRS	Rwy Ldg	6790
234°	TDZE	17
	Apt Elev	20

RNAV (GPS) RWY 23

ADAK (ADK)(PADK)

RNP APCH-GPS.	MALS	MISSED APPROACH: Climb to 6600 on course 229° to XERIC, and right turn on course 302° to DEJE and hold.
⚠ Circling not authorized at night. Circling NA northwest of Rwy 5-23.	⚠	

AWOS-3P 134.5	ANCHORAGE CENTER 126.4 254.3	CTAF 122.9 0
------------------	---------------------------------	-----------------



AK, 07 AUG 2025 to 02 OCT 2025

AK, 07 AUG 2025 to 02 OCT 2025