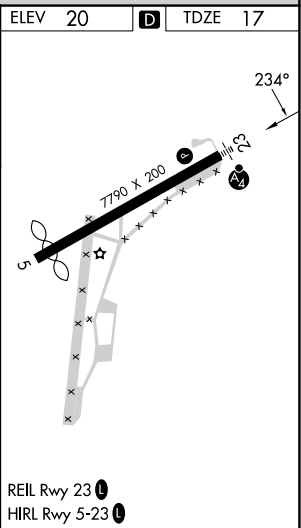


25219

NDB/DME RWY 23
ADAK (ADK)(PADK)

AWOS-3P 134.5	ANCHORAGE CENTER 126.4 254.3	CTAF 122.9 0
-------------------------	--	------------------------



5000
ADK 234°
ADK NDB/DME

9000
ADK
ADK 2.7

VGSB and descent angles not coincident
(VGSB Angle 3.50/TCH 53).

GATIF
ADK 9.7

ADK 15

234°

4400

2800

≤ 3.38°
TCH 43

0.6 7 NM 5.3 NM

CATEGORY	A	B	C	D
S-23	1600/60 1583 (1600-1¼)	1600-1½ 1583 (1600-1½)	1600-3 1583 (1600-3)	
CIRCLING	1600-1¼ 1580 (1600-1¼)	1600-1½ 1580 (1600-1½)	1600-3 1580 (1600-3)	2540-3 2520 (3000-3)

ADAK (ADK)(PADK)
NDB/DME RWY 23

AK, 07 AUG 2025 to 02 OCT 2025