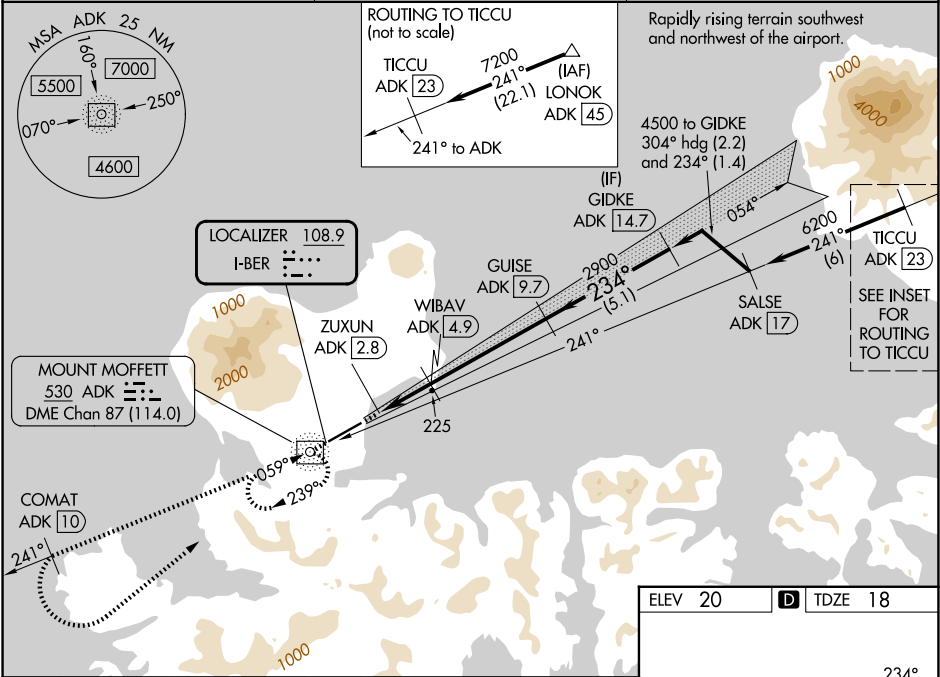


LOC I-BER	APP CRS	Rwy Ldg
108.9	234°	6790
		TDZE
		18
		Apt Elev
		20

ILS Z or LOC Z RWY 23
ADAK (ADK) (PADK)

ADF and DME required.	MALS	MISSED APPROACH: Climb to 5400 direct ADK NDB/DME and on the 241° bearing from ADK NDB/DME to COMAT/ADK 10 DME and left turn direct ADK NDB/DME and hold. Missed approach requires minimum climb of 409 feet per NM to 2700; if unable to meet climb gradient, see ILS Y or LOC Y RWY 23.
⚠ Circling NA at night. Circling NA northwest of Rwy 5-23. Rwy 23 helicopter visibility reduction below ¾ SM NA. DME from ADK NDB. Simultaneous reception of I-BER and ADK DME required. Cat E for USAF/USN use only.	⚠	

AWOS-3P 134.5	ANCHORAGE CENTER 126.4 254.3	CTAF 122.9
------------------	---------------------------------	---------------



5400	ADK	ADK	COMAT	ADK	ADK
↑	241°	241°	10	241°	241°
*LOC only					
ADK NDB/DME	ZUXUN	WIBAV	2900	GIDKE	4500
	ADK [2.8]	ADK [4.9]	ADK [9.7]	ADK [14.7]	
			2900		4500
			760*		GS 3.50°
					TCH 53
	0.8	2.1 NM	4.7 NM	5.1 NM	
CATEGORY	A	B	C	D	E
S-ILS 23	309/50 291 (300-1)				
S-LOC 23	480/55 462 (500-1)		480-1 3/8 462 (500-1 3/8)		
CIRCLING	720-1 700 (700-1)		1060-3 1040 (1100-3)	2400-3 2380 (2400-3)	2440-3 2420 (2500-3)

