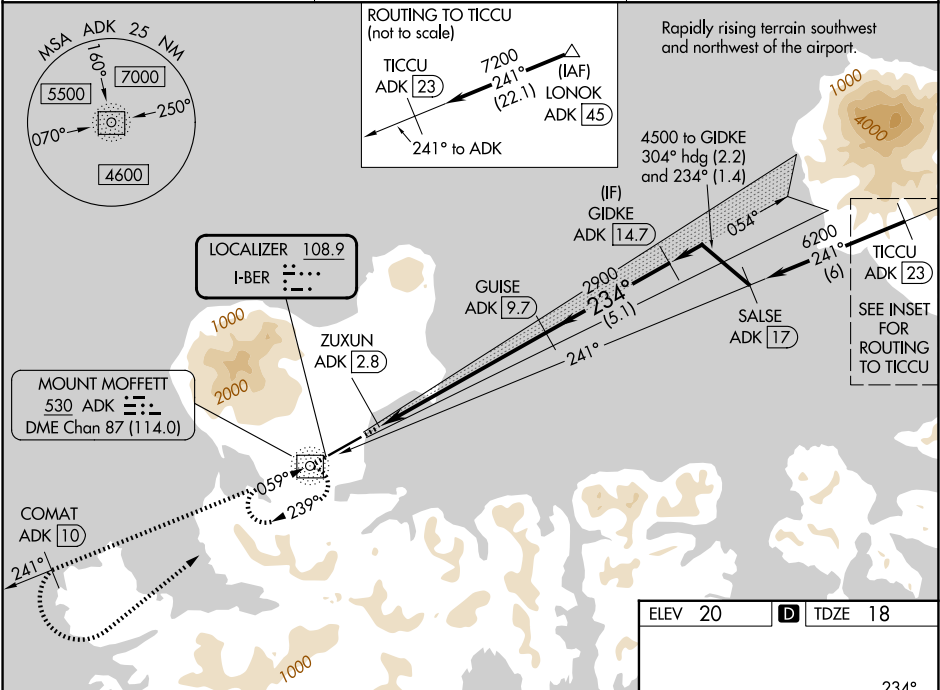


LOC I-BER	APP CRS	Rwy Ldg	6790
108.9	234°	TDZE	18
		Apt Elev	20

ILS Y or LOC Y RWY 23
ADAK (ADK) (PADK)

ADF and DME required.	MALS	MISSED APPROACH: Climb to 5400 direct ADK NDB/DME and on the 241° bearing from ADK NDB/DME to COMAT/ADK 10 DME and left turn direct ADK NDB/DME and hold.
<div><div></div><div>Circling NA at night. Circling NA northwest of Rwy 5-23. Rwy 23 helicopter visibility reduction below ¾ SM NA. DME from ADK NDB/DME. Simultaneous reception of I-BER and ADK DME required. Cat E for USAF/USN use only.</div></div>	<div><div></div><div></div></div>	

AWOS-3P 134.5	ANCHORAGE CENTER 126.4 254.3	CTAF 122.9 0
------------------	---------------------------------	-----------------



5400	ADK	ADK 241°	COMAT ADK 10	ADK	GUISE ADK 9.7	GIDKE ADK 14.7
↑						
*LOC only						
ADK NDB/DME		ZUXUN ADK 2.8	*ADK 5.9	2900	234°	4500
					2900	GS 3.50° TCH 53
	0.8	3.1 NM	3.8 NM	5.1 NM		
CATEGORY	A	B	C	D	E	
S-ILS 23	1572-5 1554 (1600-5)					
S-LOC 23	1520-1¼ 1502 (1500-1¼)	1520-1½ 1502 (1500-1½)	1520-3 1502 (1500-3)			
CIRCLING	1520-1¼ 1500 (1500-1¼)	1520-1½ 1500 (1500-1½)	1520-3 1500 (1500-3)	2400-3 2380 (2400-3)	2440-3 2420 (2500-3)	

