

**TOP ALTITUDE:
ASSIGNED BY ATC**

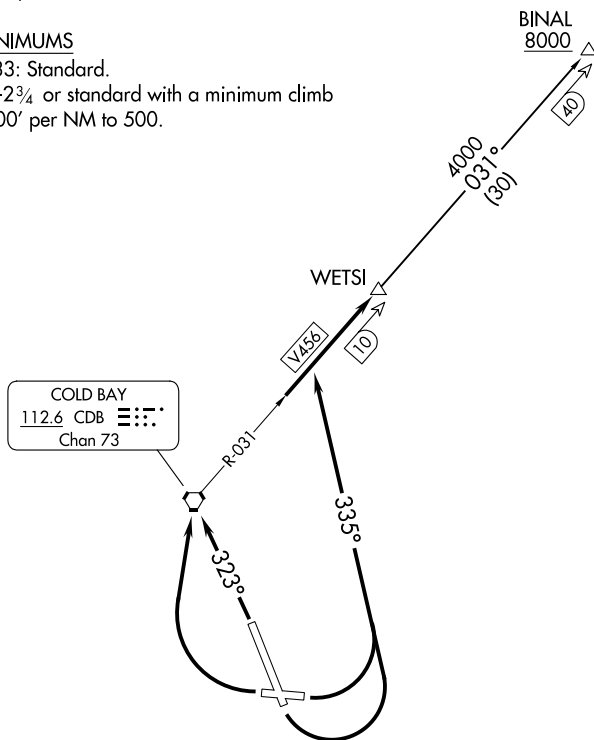
ANCHORAGE CENTER
118.5 278.3
COLD BAY RADIO
123.6

NOTE: DME required.

TAKEOFF MINIMUMS

Rwys 8, 15, 33: Standard.

Rwy 26: 900-2¾ or standard with a minimum climb of 400' per NM to 500.



NOTE: Chart not to scale.

DEPARTURE ROUTE DESCRIPTION

TAKEOFF RUNWAYS 8, 15: Climbing left turn heading 335°, thence

TAKEOFF RUNWAY 26: Climbing right turn direct CDB VORTAC, thence . . .

TAKEOFF RUNWAY 33: Climb heading 323° direct CDB VORTAC, thence . . .

. . . intercept CDB VORTAC R-031 to join V456 northeast bound to WETSI
maintain assigned altitude.

BINAL TRANSITION (WETSI2.BINAL): From over WETSI on CDB R-031 to BINAL.

WETSI TWO DEPARTURE

(WETSI2.WETSI) 10SEP20

COLD BAY, ALASKA

COLD BAY (CDB) (PACD)

AK, 07 AUG 2025 to 02 OCT 2025