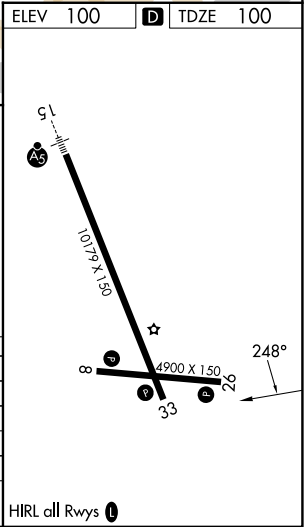
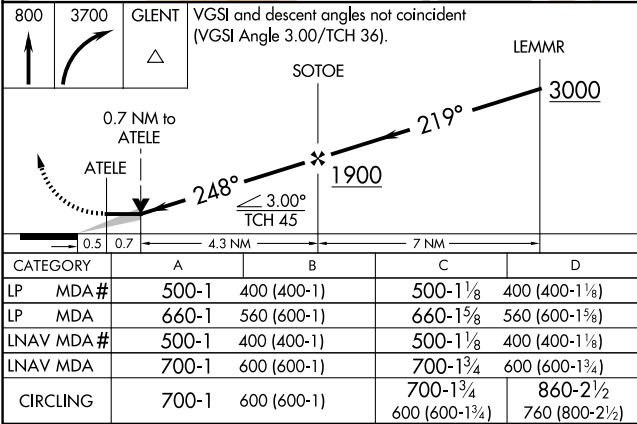
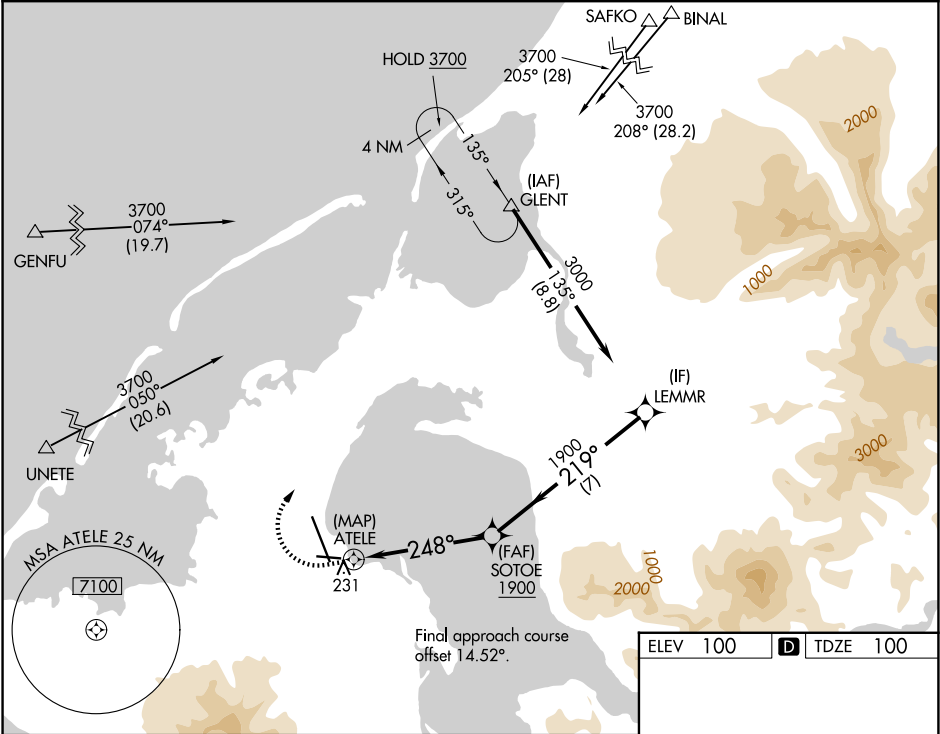


WAAS CH 42730 W26A	APP CRS 248°	Rwy Ldg TDZE Apt Elev	4900 100 100
--	------------------------	-----------------------------	---

RNAV (GPS) RWY 26
COLD BAY (CDB) (PACD)

RNP APCH.	MISSED APPROACH: Climb to 800 then climbing right turn to 3700 direct GLENT and hold, continue climb-in-hold to 3700. # Missed approach requires a minimum climb of 280 feet per NM to 1180.
⚠ Circling NA for Cat B, C, and D southwest of Rwy 15-33.	

ASOS 135.75	ANCHORAGE CENTER 118.5 278.3	COLD BAY RADIO 123.6 (CTAF) 0
-----------------------	--	---



AK, 07 AUG 2025 to 02 OCT 2025

AK, 07 AUG 2025 to 02 OCT 2025