

HI-VOR or TACAN RWY 15

VORTAC CDB <b>112.6</b> Chgn <b>73</b>	APCH CRS <b>145°</b>	Rwy Idg <b>10,179</b> TDZE <b>75</b> Arpt Elev <b>100</b>
--	-------------------------	---

AL-1241 [USAF]

COLD BAY (CDB) (PACD)

DME required

**T** \* When ALS inop, increase vis to 1 $\frac{3}{8}$  miles.  
\*\* Circling not authorized SW of Rwy 15-33

MALSR



**MISSED APPROACH:** Climb to 1200, then climbing left turn to 3000 direct CDB VORTAC, then on CDB R-329 to DEADS/CDB 10 DME and hold.

ANCHORAGE CENTER

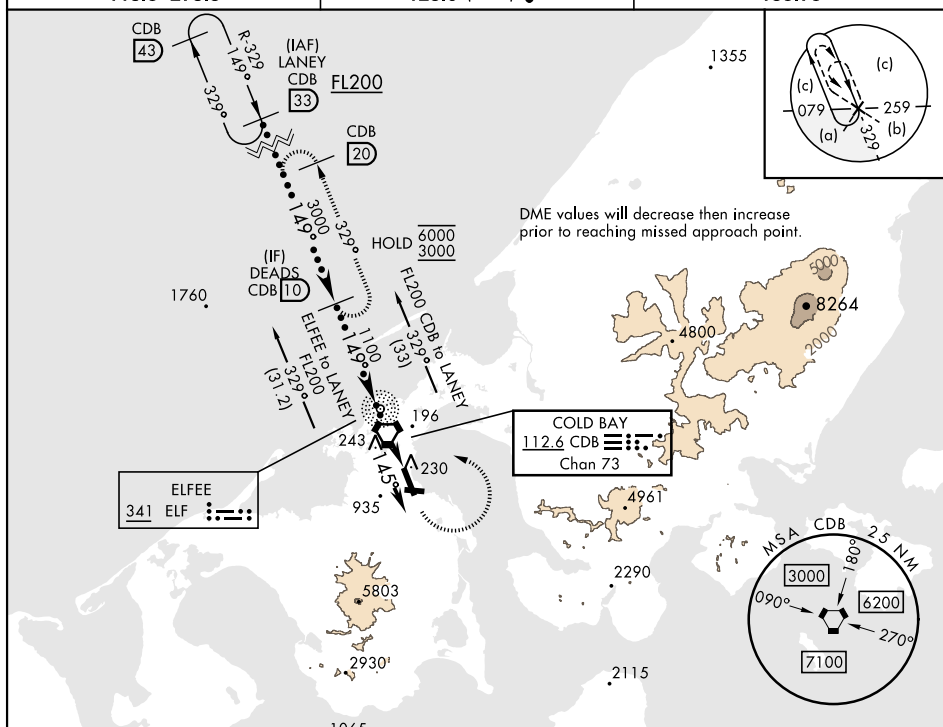
**118.5 278.3**

COLD BAY RADIO

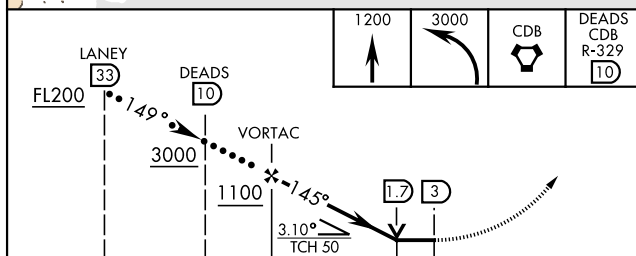
**123.6 (CTAF) L**



ASOS

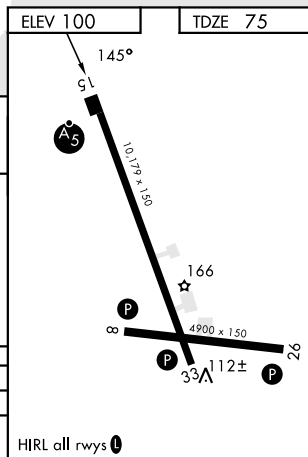
135.75



EMERG SAFE ALT 100 NM 11,600



			
CATEGORY	C	D	E
S-15*	540/50                  465                  (500-1)		
 CIRCLING**	560-1½ 460 (500-1½)	860-2½ 760 (800-2½)	940-3 840 (900-3)



COLD BAY, ALASKA

55°12'N-162°44'W

COLD BAY (CDB) (PACD)

Amdt 5 02DEC21

HI-VOR or TACAN RWY 15

AK, 07 AUG 2025 to 02 OCT 2025