

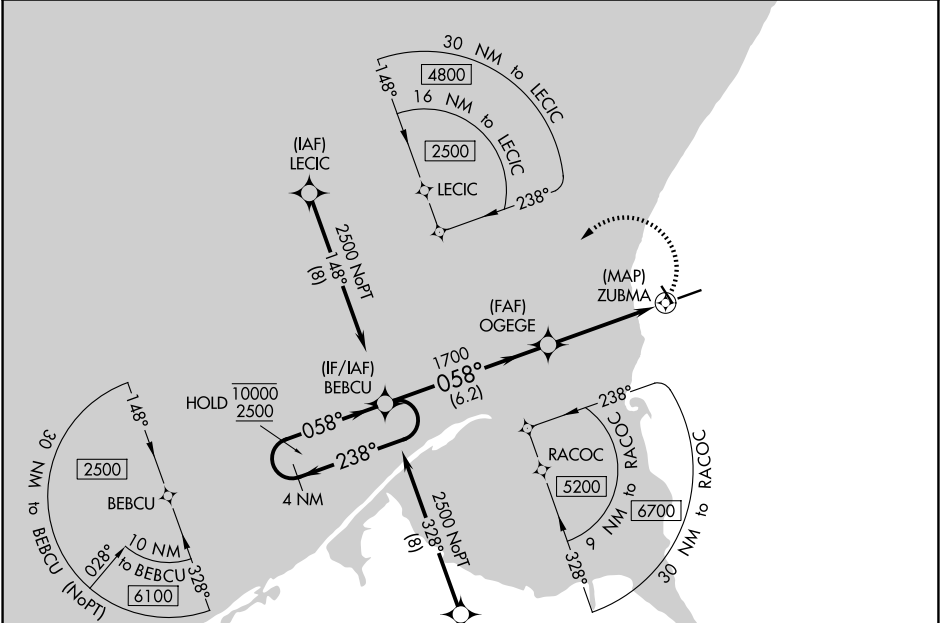
APP CRS	Rwy Ldg	5000
058°	TDZE	93
	Apt Elev	95

RNAV (GPS) RWY 6

PORT HEIDEN (PTH)(PAPH)

RNP APCH.	MISSED APPROACH: Climbing left turn to 2500 direct BEBCU and hold.
<div><div></div><div>Rwy 6 helicopter visibility reduction below 1 SM NA.</div></div>	

AWOS-3P 135.4	ANCHORAGE CENTER 132.9 288.3	CTAF 122.8 0
------------------	---------------------------------	-----------------



ELEV 95

TDZE 93

4 NM Holding Pattern

10000
2500

238°

058°

058°

1700

3.00° TCH 31

ZUBMA

6.2 NM

4.5 NM

0.5

2500

BEBCU

CATEGORY	A	B	C	D
LNAV MDA	500-1	407 (500-1)	500-1½	407 (500-1½)
CIRCLING	500-1 405 (500-1)	560-1 465 (500-1)	560-1½ 465 (500-1½)	700-2 605 (700-2)

REIL Rwy 6

REIL Rwy 14 0

MIRL Rwy 6-24 and 14-32 0

AK, 07 AUG 2025 to 02 OCT 2025

AK, 07 AUG 2025 to 02 OCT 2025