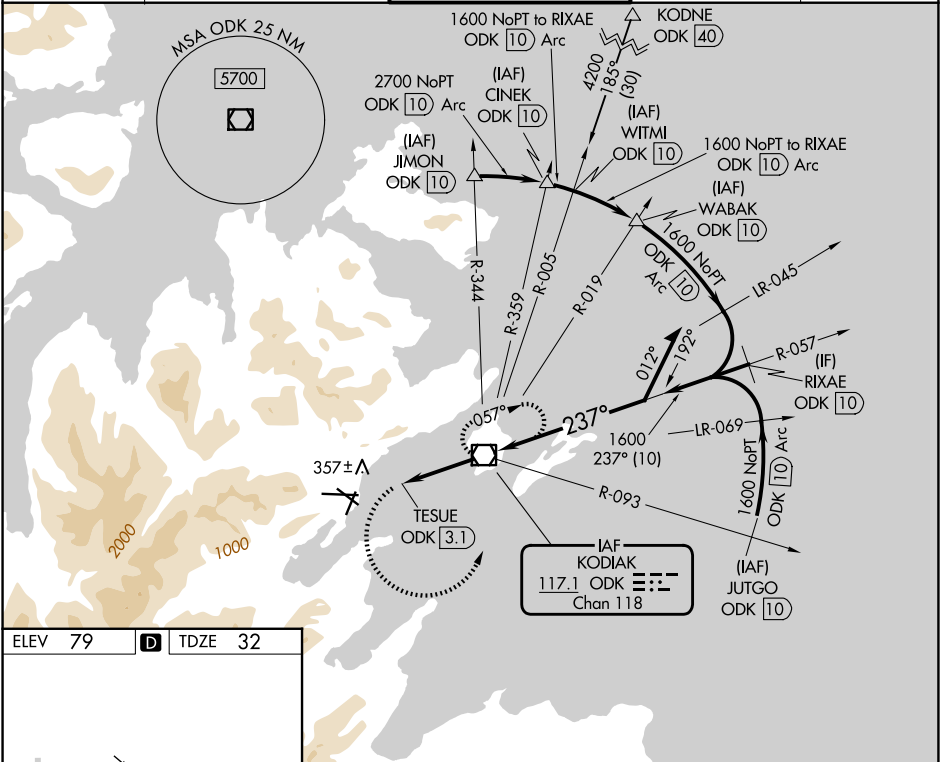


VOR/DME ODK	APP CRS	Rwy Ldg	7534
117.1	237°	TDZE	32
Chan 118		Apt Elev	79

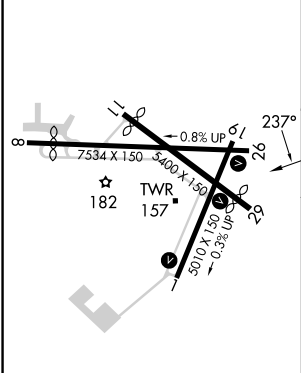
VOR RWY 26  
KODIAK (ADQ)(PADQ)

<p><b>⚠</b> Circling NA north of Rwy 8-26 and west of Rwy 1-19.</p> <p><b>⚠</b> Circling Rwy 1 NA at night. Circling NA to Rwy's 8, 11 and 19.</p> <p>Rapidly rising terrain north, west, and south of airport.</p>	<p>MISSED APPROACH: Climbing left turn to 3700 on heading 079° then left turn direct ODK VOR/DME and hold.</p>
---	--

ATIS 134.45	ANCHORAGE CENTER 125.1 281.4	KODIAK TOWER ★ 119.8 (CTAF) 0 239.0	GND CON 121.9	UNICOM 122.8
----------------	---------------------------------	--	------------------	-----------------



ELEV 79	<b>D</b>	TDZE 32
---------	----------	---------



REIL Rwy's 1 and 26	
HIRL Rwy's 1-19, 8-26, and 11-29	
FAF to MAP 3.1 NM	
Knots	60 90 120 150 180
Min:Sec	3:06 2:04 1:33 1:14 1:02

<p>3700</p> <p>hdg 079°</p>		<p>ODK</p> <p>3700</p>		<p>VGSI and descent angles not coincident (VGSI Angle 2.05/TCH 54)</p>	
<p>TESUE ODK 3.1</p>		<p>ODK 2</p>		<p>4000</p>	
<p>1.6 NM</p>		<p>1.1 NM</p>		<p>2 NM</p>	
CATEGORY	A	B	C	D	
S-26	660-2 628 (600-2)				
CIRCLING	660-2 581 (600-2)	720-2 641 (700-2)	1140-3 1061 (1100-3)	NA	

AK, 07 AUG 2025 to 02 OCT 2025

AK, 07 AUG 2025 to 02 OCT 2025