

KODIAK, ALASKA

AL-1238 (FAA)

25219

|  |                        |   |
|--|------------------------|---|
| WAAS<br>CH <b>93941</b><br><b>W26A</b> | APP CRS<br><b>239°</b> | Rwy Ldg <b>7534</b><br>TDZE <b>32</b><br>Apt Elev <b>79</b> |
|--|------------------------|---|

## RNAV (GPS) RWY 26

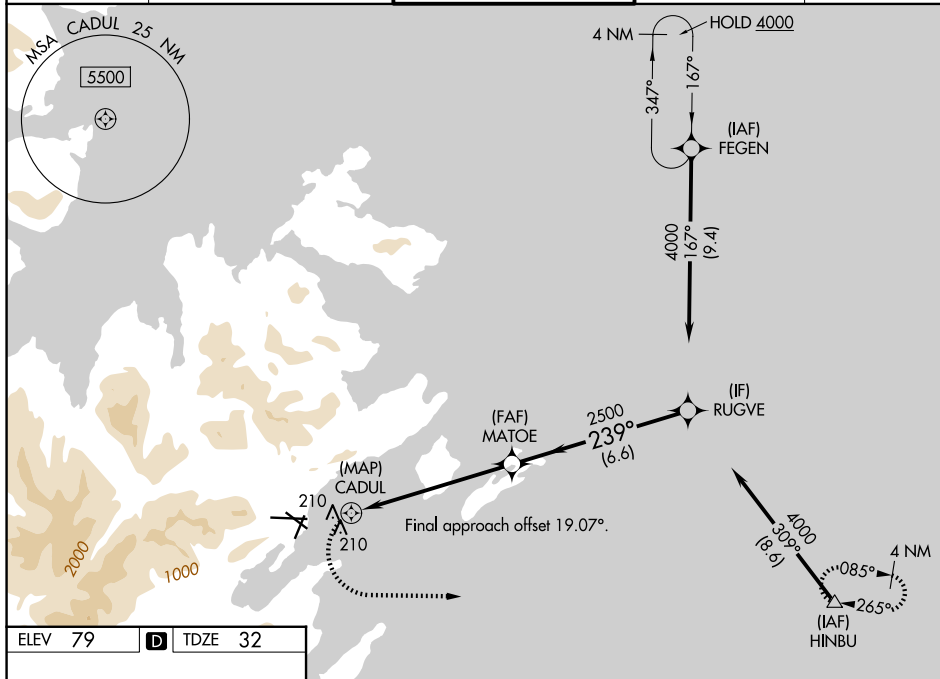
KODIAK (ADQ)(PADQ)

RNP APCH - GPS.

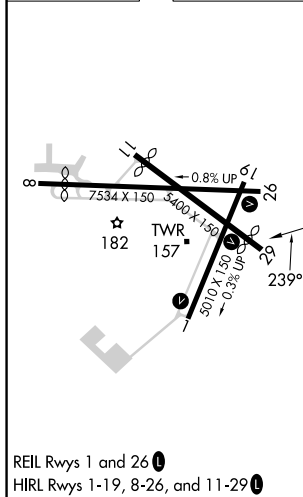
- T** Circling NA north of Rwy 8-26 and west of Rwy 1-19.  
**A** Circling Rwy 1 NA at night. Circling to Rwy 8, 11 and 19 NA.  
 Rapidly rising terrain north, west, and south of airport.

**MISSED APPROACH:** (Do not exceed 210K until HINBU)  
Climbing left turn to 4000 direct HINBU and hold, continue climb-in-hold to 4000. \*Missed approach requires minimum climb of 357 feet per NM to 1500.

|                |                                 |  |                  |                 |
|----------------|---------------------------------|--|------------------|-----------------|
| ATIS<br>134.45 | ANCHORAGE CENTER<br>125.1 281.4 | KODIAK TOWER *<br>119.8 (CTAF) 0 239.0 | GND CON<br>121.9 | UNICOM<br>122.8 |
|----------------|---------------------------------|--|------------------|-----------------|



|         |          |         |
|---------|----------|---------|
| ELEV 79 | <b>D</b> | TDZE 32 |
|---------|----------|---------|



KODIAK, ALASKA

Amdt 3B 07AUG25

57°45'N-152°30'W

KODIAK (ADQ)(PADQ)

RNAV (GPS) RWY 26

AK, 07 AUG 2025 to 02 OCT 2025

AK, 07 AUG 2025 to 02 OCT 2025