

LOC/DME I-ADQ	APP CRS	Rwy Ldg	7534
110.9	258°	TDZE	32
Chan 46		Apt Elev	79

ILS Y or LOC Y RWY 26

KODIAK (ADQ)(PADQ)

DME required.

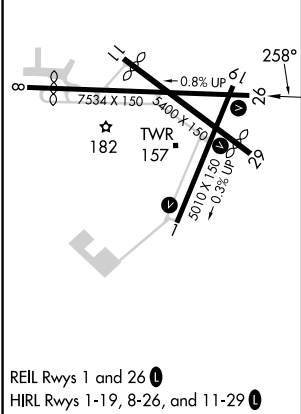
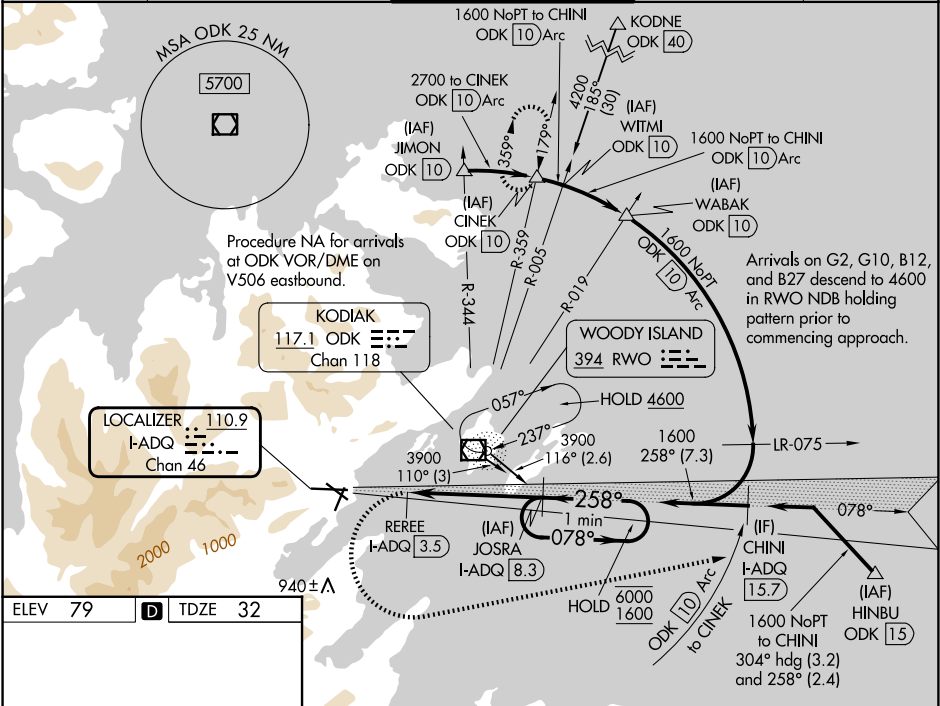
▼

⚠

Circling NA north of Rwy 8-26 and west of Rwy 1-19. Circling Rwy 1 NA at night.  
Circling NA to Rwys 8, 11 and 19. Rapidly rising terrain north, west, and south of airport. ILS unusable from 2 DME inbound. When advised by ATC of tall ships in the harbor, procedure NA.

MISSED APPROACH: Climbing left turn to 5000 on heading 065° to intercept ODK VOR/DME 10 DME Arc. Arc north to CINEK/ODK 10 DME and hold

ATIS 134.45	ANCHORAGE CENTER 125.1 281.4	KODIAK TOWER* 119.8 (CTAF) 239.0	GND CON 121.9	UNICOM 122.8
----------------	---------------------------------	-------------------------------------	------------------	-----------------



5000	north on ODK VOR/DME 10 Arc	CINEK	JOSRA I-ADQ 8.3	One Minute Holding Pattern
Use I-ADQ DME when on the localizer course.				
REEREE I-ADQ 3.5				
2.2	4.8 NM			
CATEGORY	A	B	C	D
S-ILS 26	636-3	604 (600-3)		824-3 792 (800-3)
S-LOC 26	640-2½	608 (600-2½)		1060-3 1028 (1000-3)
CIRCLING	660-2½ 581 (600-2½)	720-2½ 641 (700-2½)	1140-3 1061 (1100-3)	NA