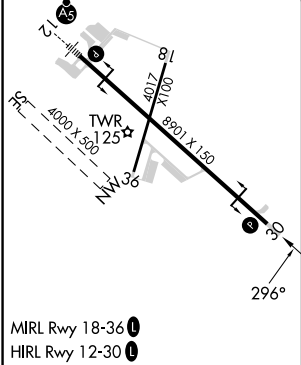
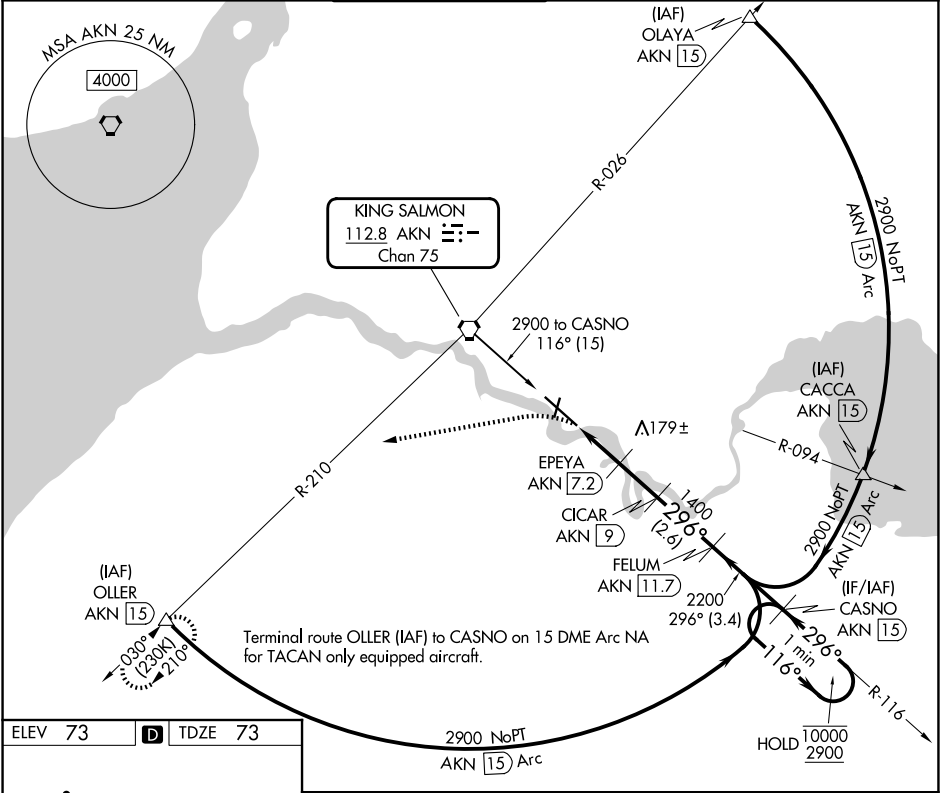


VORTAC AKN <b>112.8</b> Chan 75	APP CRS <b>296°</b>	Rwy Ldg TDZE <b>73</b> Apt Elev <b>73</b>
---------------------------------------	------------------------	---

VOR Y or TACAN Y RWY 30  
KING SALMON (AKN)(PAKN)

DME required. When local altimeter setting not received, use WSN/PFWS altimeter setting and increase all MDAs 40 feet and S-30 visibility Cat C/D/E ¼ SM.		MISSED APPROACH: Climbing left turn to 3000 on heading 240° and on AKN VORTAC R-210 to OLLER/15 DME and hold.		
ATIS <b>128.8</b>	ANCHORAGE CENTER <b>124.8 354.0</b>	KING SALMON TOWER★ <b>118.3 279.5</b>	GND CON <b>121.9</b>	UNICOM <b>122.95</b>
		CTAF <b>121.9 352.05</b>		



3000 AKN R-210 OLLER hdg 240°		CASNO AKN 15		One Minute Holding Pattern	
AKN 5.1		EPEYA AKN 7.2 CICAR AKN 9	FELUM AKN 11.7	116° → 10000 ← 296° 2900	
AKN 6.3		≤ 3.10° TCH 45	296°	2200	
1.1 NM		0.9	1.8 NM	2.6 NM	3.4 NM
CATEGORY	A	B	C	D	E
S-30	480-1 407 (500-1)		480-1½ 407 (500-1½)		
CIRCLING	580-1 507 (600-1)		580-1½ 507 (600-1½)	900-2¾ 827 (900-2¾)	960-3 887 (900-3)

AK, 07 AUG 2025 to 02 OCT 2025

AK, 07 AUG 2025 to 02 OCT 2025