

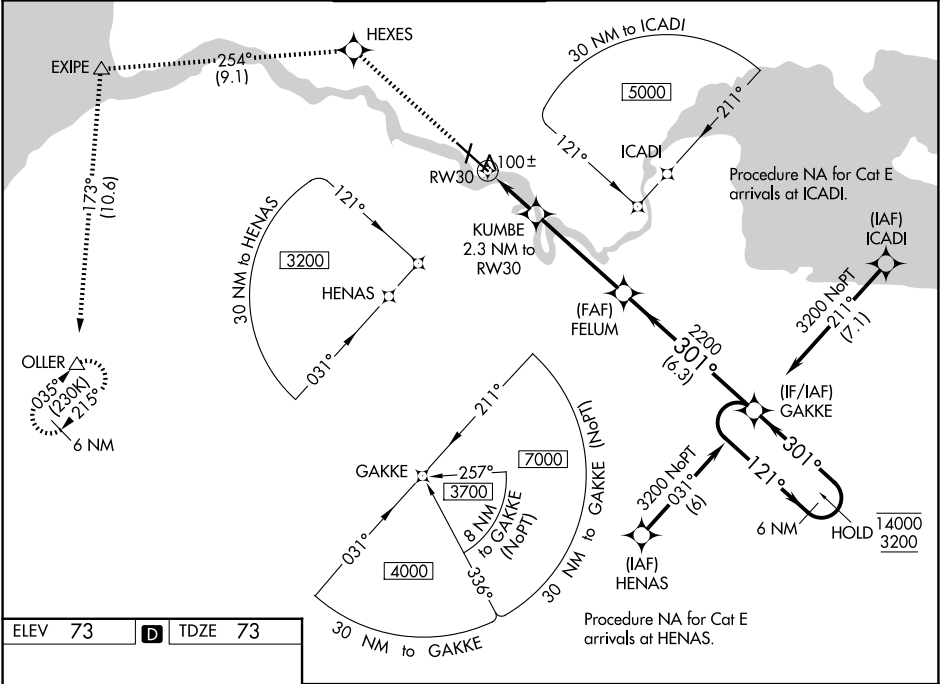
WAAS CH 77908 W30A	APP CRS 301°	Rwy Ldg TDZE 73 Apt Elev 73
--	------------------------	---

RNAV (GPS) RWY 30

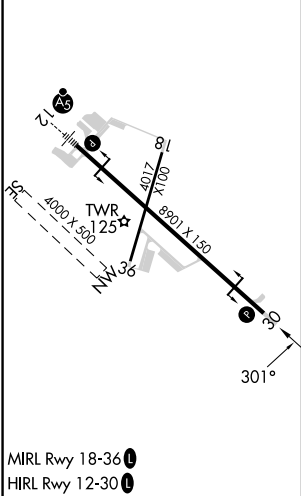
KING SALMON (AKN)(PAKN)

RNP APCH-GPS.		MISSED APPROACH: Climb to 3000 direct HEXES and on track 254° to EXIPE and on track 173° to OLLER and hold.
For uncompensated Baro-VNAV systems, LNAV/VNAV NA below -19°C or above 54°C. When control tower closed, increase LPV and LNAV/VNAV visibility all Cats to 1 SM.		

ATIS 128.8	ANCHORAGE CENTER 124.8 354.0	KING SALMON TOWER* 118.3 279.5	GND CON 121.9	UNICOM 122.95	CTAF 121.9 352.05
----------------------	--	--	-------------------------	-------------------------	-----------------------------



ELEV 73	D	TDZE 73
---------	----------	---------



3000	HEXES	EXIPE	OLLER	GAKKE	
↑	tr 254°	tr 173°	△	6 NM Holding Pattern	
*LNAV only		KUMBE 2.3 NM to RW30	FELUM 2200	121° → 14000 ← 301° 3200	
0.8 NM to RW30		860	2200	GP 3.00° TCH 45	
0.8 NM		1.5 NM	4.2 NM	6.3 NM	
CATEGORY	A	B	C	D	E
LPV DA	273-¾ 200 (200-¾)				
LNAV/VNAV DA	323-¾ 250 (300-¾)				376-⅞ 303 (400-⅞)
LNAV MDA	360-1 287 (300-1)				
CIRCLING	580-1	507 (600-1)	580-1½ 507 (600-1½)	900-2¾ 827 (900-2¾)	960-3 887 (900-3)