

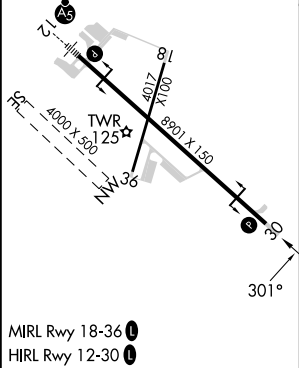
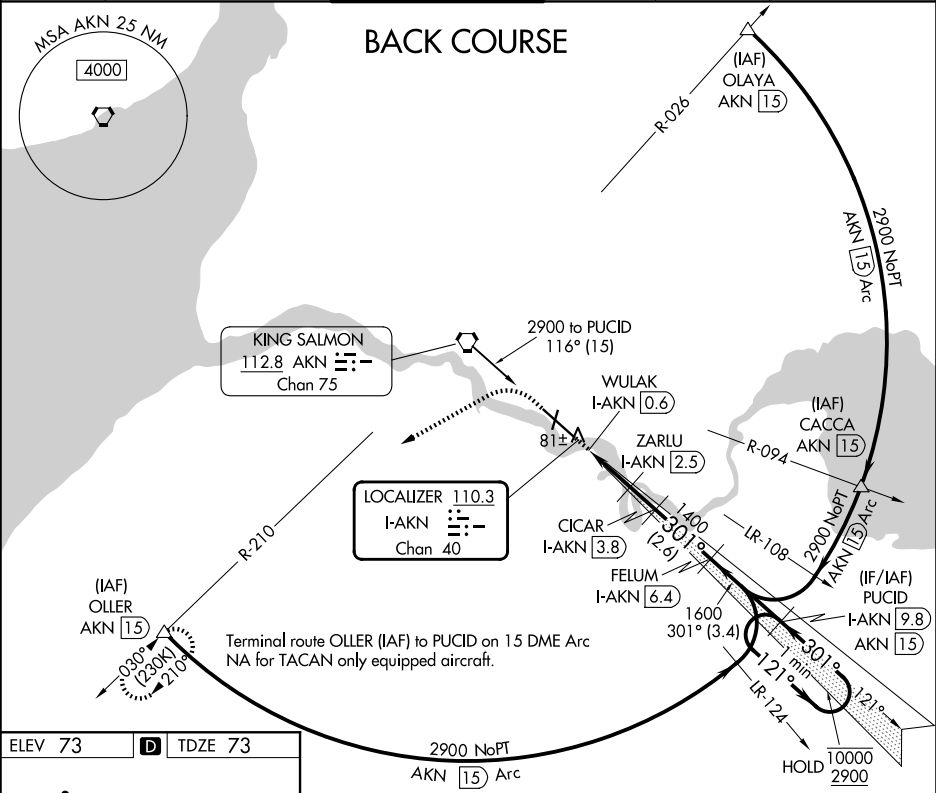
LOC/DME I-AKN	APP CRS	Rwy Ldg	8501
<b>110.3</b>	<b>301°</b>	TDZE	<b>73</b>
Chan <b>40</b>		Apt Elev	<b>73</b>

LOC BC RWY 30

KING SALMON (AKN)(PAKN)

DME required.	MISSED APPROACH: Climb to 600 then climbing left turn to 3000 on heading 240° and AKN VORTAC R-210 to OLLER/AKN 15 DME and hold.
When local altimeter setting not received, use WSN/PFWS altimeter setting and increase all MDAs 40 feet.	

ATIS <b>128.8</b>	ANCHORAGE CENTER <b>124.8 354.0</b>	KING SALMON TOWER* <b>118.3 279.5</b>	GND CON <b>121.9</b>	UNICOM <b>122.95</b>	CTAF <b>121.9 352.05</b>
----------------------	--	--	-------------------------	-------------------------	-----------------------------



ELEV 73	D	TDZE 73	2900 NoPT AKN 15 Arc				
600			3000	OLLER AKN R-210	Disregard GS indications.		PUCID I-AKN 9.8
hdg 240°			WULAK I-AKN 0.6	ZARLU I-AKN 2.5	CICAR I-AKN 3.8	FELUM I-AKN 6.4	One Minute Holding Pattern
301°			1000	1400	1600	10000 2900	Use I-AKN DME when on the localizer course.
0.7			2 NM	1.2 NM	2.6 NM	3.4 NM	
CATEGORY	A	B	C	D	E		
S-30	340-1 267 (300-1)						
CIRCLING	580-1 507 (600-1)		580-1½ 507 (600-1½)		900-2¾ 827 (900-2¾)	960-3 887 (900-3)	