

HOMER, ALASKA

AL-1236 (FAA)

25163

WAAS CH <b>82402</b> <b>W22A</b>	APP CRS <b>218°</b>	Rwy Ldg TDZE Apt Elev	<b>6701</b> <b>84</b> <b>84</b>
--	------------------------	-----------------------------	---------------------------------------

RNAV (GPS) Z RWY 22  
HOMER (HOM) (PAHO)

RNP APCH.

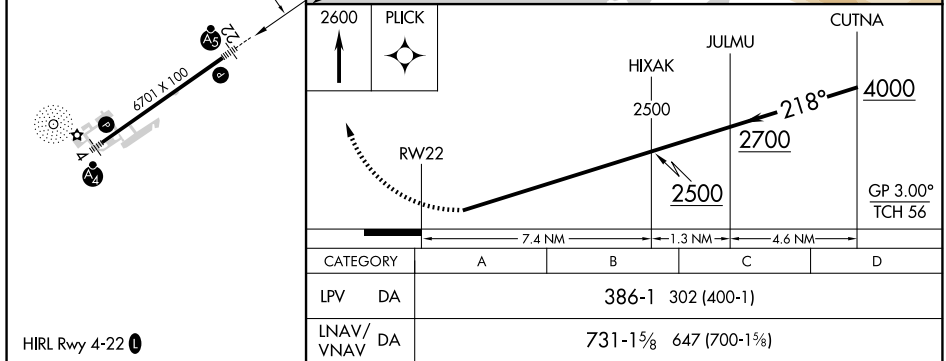
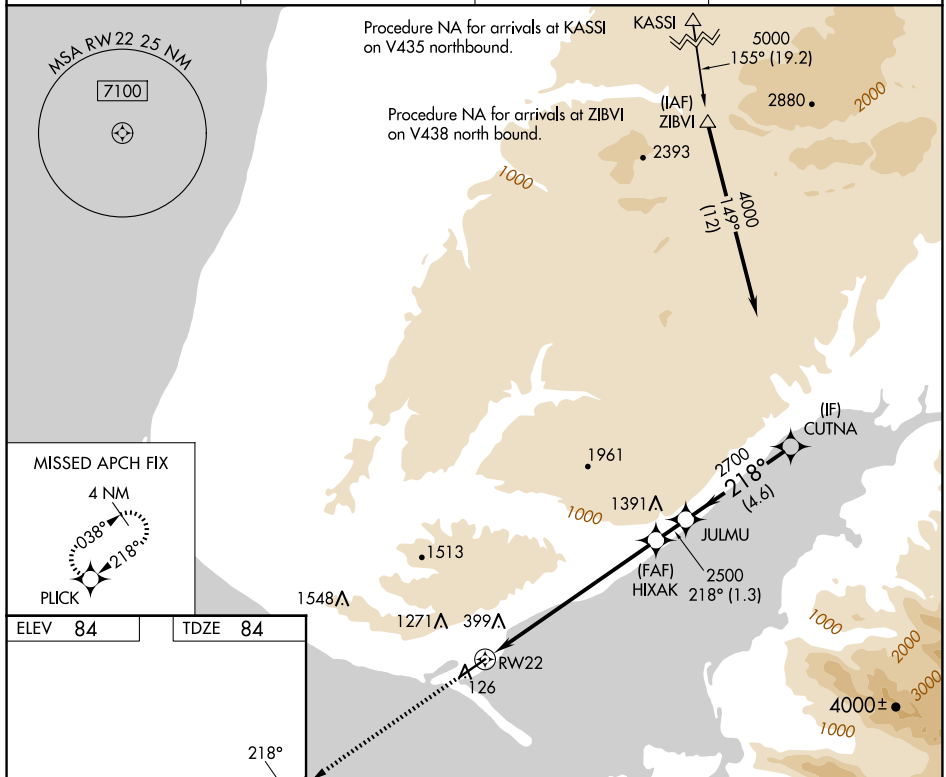
**T** Helicopter visibility reduction below  $\frac{3}{4}$  SM NA. Inop table does not apply to LPV minimums. Baro-VNAV NA. When local altimeter setting not received, procedure NA. For inop ALS increase LNAV/VNAV all Cats visibility to  $1\frac{1}{8}$  SM.

MALSR



**MISSED APPROACH:** Climb to 2600 direct PLICK and hold.

AFIS <b>135.65</b>	ANCHORAGE CENTER <b>125.9 270.3</b>	HOMER RADIO <b>123.6 (CTAF) 0</b>	UNICOM <b>122.7 123.0 123.05</b>
-----------------------	--	--------------------------------------	-------------------------------------



HOMER, ALASKA  
Amdt 1D 20JUN19

59°39'N-151°29'W

HOMER (HOM) (PAHO)  
RNAV (GPS) Z RWY 22

AK, 07 AUG 2025 to 02 OCT 2025

AK. 07 AUG 2025 to 02 OCT 2025