

WAAS CH 69404 W02A	APP CRS 016°	Rwy Ldg TDZE 94 Apt Elev 100
--	------------------------	--

RNAV (GPS) RWY 2L

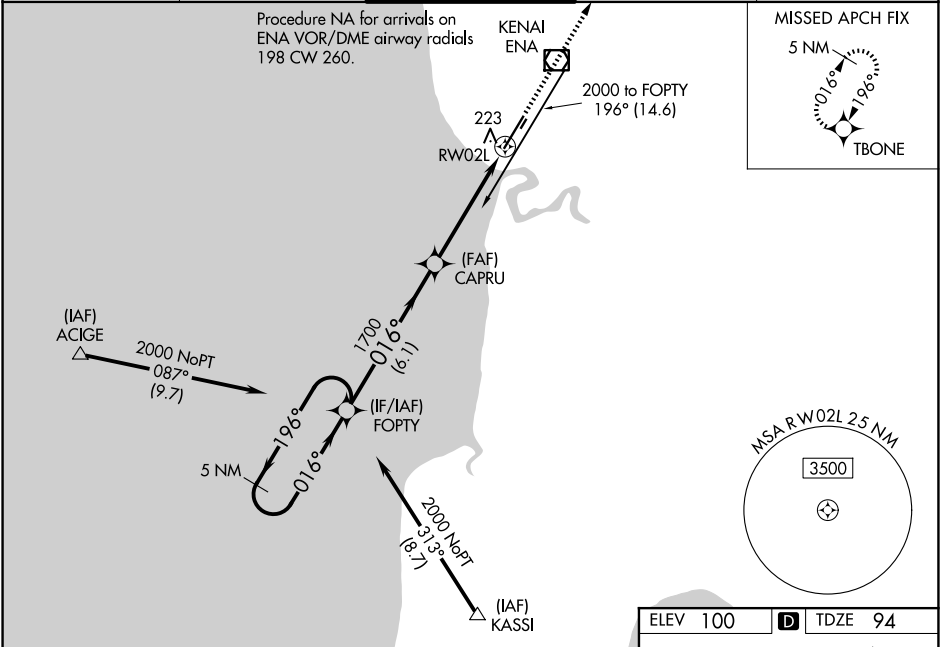
KENAI MUNI (ENA) (PAEN)

RNP APCH.

Baro-VNAV NA when using Soldotna altimeter setting. For uncompensated Baro-VNAV systems, LNAV/VNAV NA below -18°C (0°F) or above 54°C (130°F). When local altimeter setting not received, use Soldotna altimeter setting: increase LPV DA to 366 feet and LNAV/VNAV DA to 429 feet and all MDA 40 feet; increase LPV and LNAV/VNAV visibility all Cats and LNAV Cat C/D visibility ½ mile; increase Circling Cat D visibility ¼ mile. VDP NA when using Soldotna altimeter setting. Circling Rwy 2R, 20L NA at night. Circling Rwy 2W, 20W NA.

MISSED APPROACH:
Climb to 2000 direct
TBONE and hold.

ATIS 133.35	ANCHORAGE CENTER 125.7 379.1	KENAI TOWER* 121.3 (CTAF) 239.3	GND CON 118.75	KENAI RADIO 122.65
-----------------------	--	---	--------------------------	------------------------------



5 NM Holding Pattern				
FOPTY				
2000 ← 196° 016° →				
GP 3.00° TCH 53				
CAPRU				
1700				
* 1.1 NM to RW02L				
RW02L				
6.1 NM 3.8 NM 1.1 NM				
CATEGORY	A	B	C	D
LPV DA	344-¾ 250 (300-¾)			
LNAV/VNAV DA	407-1 313 (400-1)			
LNAV MDA	480-1 386 (400-1)		480-1½ 386 (400-1½)	
CIRCLING	560-1 460 (500-1)	580-1 480 (500-1)	580-1½ 480 (500-1½)	740-2 640 (700-2)

